

Dialogannahme

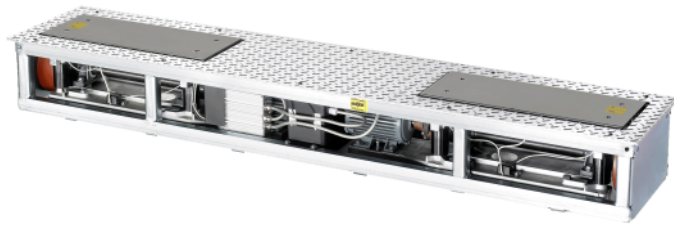
TEST LANES

Version 2025.06.06 – Prices on request

Suspension tester QS.4 | 400 V | EUSAMA (coming soon)

Only for brake tester QB.4

Article number: 1 691 620 200



Fully automatic suspension tester detects technical defects in shock absorbers, wheel suspension, wheel bearings and tires.

- Fully automatic determination of road grip, axle weight and total weight
- Measurement begins when the vehicle is put on the tester
- Direct integration of results into the QB.4 brake tester
- Fully hot-dip galvanized

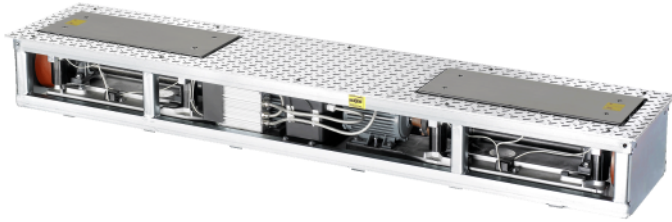
Supply volume:

- QS.4 suspension tester
- Connecting cable
- Fixing material

Suspension tester SA 640 | 400 V | EUSAMA

Special accessory for series BD 4xxx brake tester | only to be used for checking the technical condition of suspension elements

Article number: 1 691 620 307



- Under unfavorable conditions, the road surface adhesion of a wheel is governed by the technical condition of the suspension elements (suspension system, wheel bearings, tires and shock absorbers).
- The SA 640 measures the relative road surface adhesion of a wheel on the basis of the internationally recognized EUSAMA principle.
- The results of the full chassis test provide an overall assessment of the road safety of the vehicle.
- Measurement system: Bending bar with strain gauge

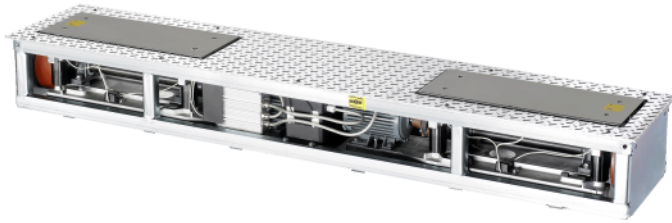
Scope of delivery:

- Suspension tester SA 640
- RR Connecting cable
- RR Set of clamping fixtures and fastening materials

Suspension tester SA 640 | 230 V | EUSAMA

Special accessory for series BD 4xxx brake tester | only to be used for checking the technical condition of suspension elements

Article number: 1 691 620 311



- Under unfavorable conditions, the road surface adhesion of a wheel is governed by the technical condition of the suspension elements (suspension system, wheel bearings, tires and shock absorbers).
- The SA 640 measures the relative road surface adhesion of a wheel on the basis of the internationally recognized EUSAMA principle.
- The results of the full chassis test provide an overall assessment of the road safety of the vehicle.
- Measurement system: Bending bar with strain gauge

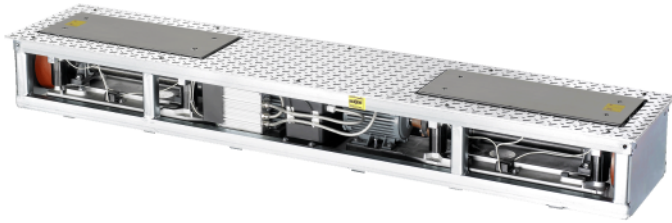
Scope of delivery:

- Suspension tester SA 640
- RR Connecting cable
- RR Set of clamping fixtures and fastening materials

Suspension tester SN 680 | 400 V | EUSAMA | with noise detection

Special accessory for series BD 4xxx brake tester | only to be used for checking the technical condition of suspension elements

Article number: 1 691 620 309



- Under unfavorable conditions, the road surface adhesion of a wheel is governed by the technical condition of the suspension elements (suspension system, wheel bearings, tires and shock absorbers).
- The SN 680 measures the relative road surface adhesion of a wheel on the basis of the internationally recognized EUSAMA principle.
- The results of the full chassis test provide an overall assessment of the road safety of the vehicle.
- Measurement system: Bending bar with strain gauge

Scope of delivery:

- Suspension tester SN 680
- RR Connecting cable
- RR Set of clamping fixtures and fastening materials

Suspension tester SA 650 | Passenger cars | 13t drive-over load | EUSAMA | 400V

Special accessory for series BD 5xxx and BD 8xxx brake tester | for checking the technical condition of suspension elements on passenger cars in a truck test lane

Article number: 1 691 620 501



Scope of delivery:

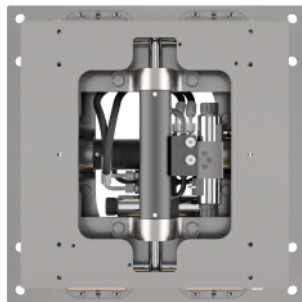
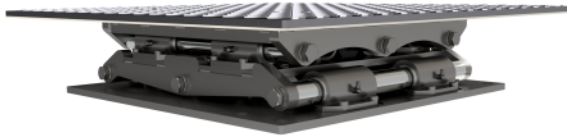
- Suspension tester
- Power supply cable
- Fastening materials

Note: For pit installations, the maximum possible test width is 2400mm.

Joint Play Detector GST 8600 | Truck | 20t | 400V

Quick detection of defects and wear on wheel bearings, steering parts, suspension, stabilizers, and trailer couplings on trucks with up to 20t axle loads

Article number: 1 691 850 200



Joint Play Detector Truck 20t - Quick detection of defects and wear on trucks with up to 20t axle load:

- wheel bearings,
- steering parts,
- suspension,
- stabilizers,
- Kingpins and
- trailer couplings

Advantages:

- Smooth movement due to powerful hydraulic unit with high precision for easy and fast positioning
- Low-noise under-oil hydraulic power unit
- Two digital test plates built into the foundation at ground level
- Galvanized test plates with integrated, digital valve control electronics
- Bearing is provided by extra-robust, hard-chrome plated steel shafts
- Extremely robust and low-maintenance design for long service life
- Test plates can be moved in horizontal, vertical, and transversal directions
- Further operating modes including automatic modes (optionally)
- Wireless radio hand lamp with one-hand operation for movements control
- Wireless radio hand lamp with long-life LEDs and lens for an ideal light beam angle
- Suitable for existing Beissbarth foundation frames (as used for GST-8508)
- Suitable for all popular foundation frames (accessories required)
- Meets the requirements of Directive 2014/45/EU

Standard swinging movements:

- Longitudinal and transverse, opposite directions

Optional swinging movements upgrades:

- Longitudinal and transverse, same direction (1691853206)
- Automatic longitudinal and transverse, same and opposite directions (1691853203)
- Automatic circular (1691853204)
- Automatic diagonal (1691853205)
- Single wheel, left / right (1691853208)
- Automatic center (1691853207)
- All movements (1691851204)

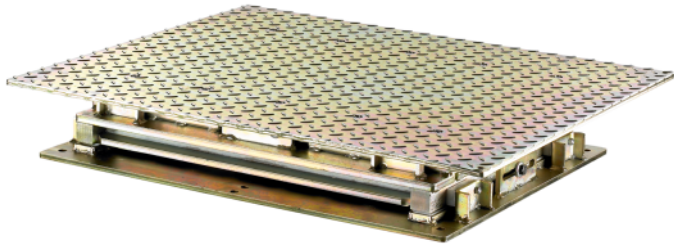
Scope of delivery:

- 2x test plates
- Hydraulic power unit including wiring
- Electrical control box including wiring
- Wireless hand lamp including charging station and power supply
- Hydraulic hose set

Joint play detector GST 8508 | 400V

Quick detection of defects and wear on suspension systems on two-tracks trucks with up to 16t axle load. Stand alone product

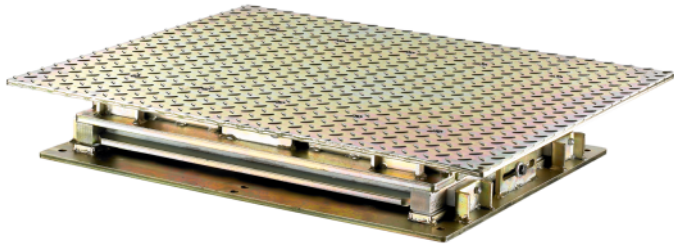
Article number: 1 691 850 100



Joint play detector GST 8508 | 230V

Quick detection of defects and wear on suspension systems on two-tracks trucks with up to 16t axle load. Stand alone product

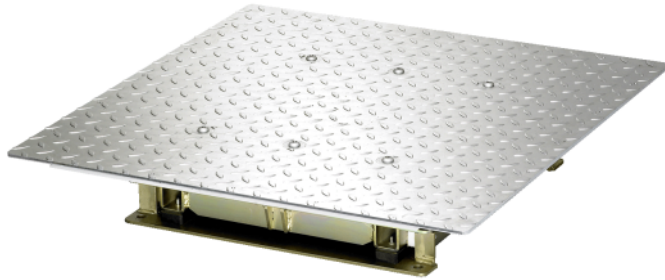
Article number: 1 691 850 101



Joint play detector GST 651 | 400 V

To detect defects and wear in the suspension systems of double-track vehicles | up to 4 t axle load

Article number: 1 691 650 000



- The geometry of the axle to be tested is displaced by moving the test plates of the GST 6xx. This makes it possible to detect impermissible play at joints and wheel bearings or to localise cracks at stub axles for example.
- The GST 651 is only to be used for the inspection of double-track vehicles with a maximum axle load of 4000 kg.
- Remote control over control lamp with control buttons (Ø 60 mm, length 205 mm, incl. Halogen bulb with reflector, GU5,3 / 38°, 12 V / 20 W)

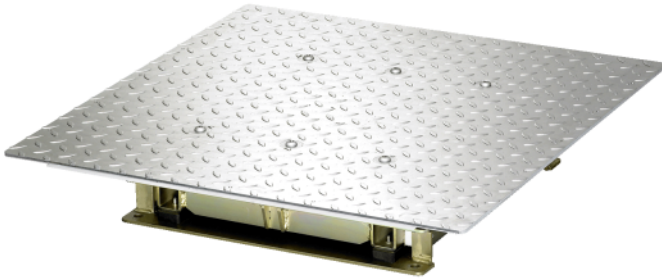
Scope of delivery:

- Test plates (2x)
- Control module incl. control lamp
- Hydraulic unit
- Hydraulic line fitting set
- Fitting set
- Hydraulic fluid (Type of fluid DIN 51524 VG 22)

Joint play detector GST 651 | 230 V

To detect defects and wear in the suspension systems of double-track vehicles | up to 4 t axle load

Article number: 1 691 650 001



- The geometry of the axle to be tested is displaced by moving the test plates of the GST 6xx. This makes it possible to detect impermissible play at joints and wheel bearings or to localise cracks at stub axles for example.
- The GST 651 is only to be used for the inspection of double-track vehicles with a maximum axle load of 4000 kg.
- Remote control over control lamp with control buttons (Ø 60 mm, length 205 mm, incl. Halogen bulb with reflector, GU5,3 / 38°, 12 V / 20 W)

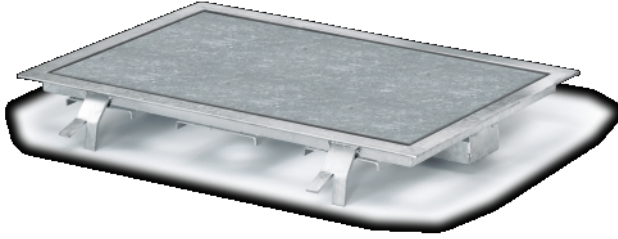
Scope of delivery:

- Test plates (2x)
- Control module incl. control lamp
- Hydraulic unit
- Hydraulic line fitting set
- Fitting set
- Hydraulic fluid (Type of fluid DIN 51524 VG 22)

Side Slip Tester ST 600

Special accessory for series BD 4xxx brake tester | only to be used for checking toe-in or toe-out on double-track vehicles

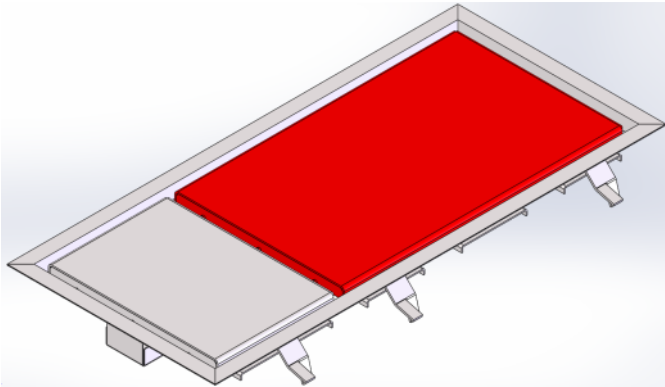
Article number: 1 691 631 013



- The ST 600 is a laterally slidable steel plate.
- A precision potentiometer or resistance strain gauge sensor measures the lateral deflection of the side slip tester.

Scope of delivery:

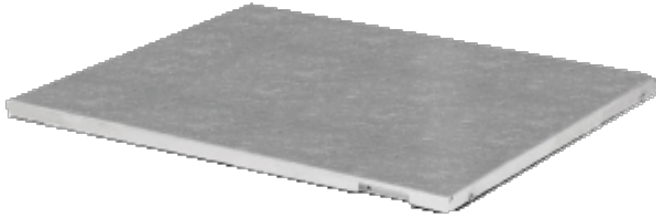
- Side slip tester ST 600 incl. mounting set
- Depending on version: - Precision potentiometer incl. cables - Resistance strain gauge sensor incl. cables - Compensation plate incl. mounting set



Side Slip Tester MSS 8400

To quickly measure toe-in or toe-out on two-tracks trucks with maximum test load of 8000kg. Compatible with both old (MB 8xxx) and new (BD 5xxx to BD 8xxx) generation brake tester

Article number: 1 691 841 007



Suspension Tester



Suspension tester QS.4 | 400 V | EUSAMA (coming soon)
Article number: 1 691 620 200



Suspension tester SA 640 | 400 V | EUSAMA
Article number: 1 691 620 307



Suspension tester SA 640 | 230 V | EUSAMA
Article number: 1 691 620 311



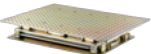
Suspension tester SN 680 | 400 V | EUSAMA | with noise detection
Article number: 1 691 620 309



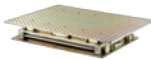
Suspension tester SA 650 | Passenger cars | 13t drive-over load | EUSAMA | 400V
Article number: 1 691 620 501



Joint Play Detector GST 8600 | Truck | 20t | 400V
Article number: 1 691 850 200



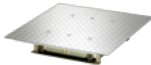
Joint play detector GST 8508 | 400V
Article number: 1 691 850 100



Joint play detector GST 8508 | 230V
Article number: 1 691 850 101



Joint play detector GST 651 | 400 V
Article number: 1 691 650 000



Joint play detector GST 651 | 230 V
Article number: 1 691 650 001

Side Slip Tester



Side Slip Tester ST 600
Article number: 1 691 631 013



Side Slip Tester MSS 8400
Article number: 1 691 841 007

Play Detector

IMPORTANT NOTES

- Please notice: This list contains spare parts, too.
- Without instruction or assembly.
- Delivery ex works including packaging.

VERSION 2025.06.06 – PRICES ON REQUEST

- Starting from now all previous lists will lose their validity.
- Please read our general terms and conditions in the latest version before ordering; to be found under www.beissbarth.com.

Beissbarth Automotive Testing Solutions GmbH

Friedrichshafener Str. 602
82205 Gilching, Germany
sales@beissbarth.com
www.beissbarth.com

Telefon: +49-(0)89-14901-0
Telefax: +49-(0)89-14901-246

Order number 1 693 602 008 **Print norm** BB XXX / XX.XX.2020 DE · Subject to technical and program changes, errors excepted.

