

Dialogannahme

# HEADLIGHT TESTING

Version 2025.06.06 – Prices on request



# Headlight testing device MLD 815 | without inclinometer

Beissbarth MLD 815 - Digital headlight measurement and adjustment

Article number: 1 692 104 358



## German Road Traffic Type-Approval Law StVZO § 29 general-inspection headlight-test directive: MLD 815 can be calibrated according to the legal requirements

- MLD 815 is TÜV-certified by prototype technical release examination in accordance with the directives for testing headlight adjustment/test equipment (German Road Traffic Type-Approval Law StVZO §50 paragraph 5).
- The alignment (leveling) of the MLD 815 on the testing bay corresponds to the latest requirements.
- Two-dimensional spirit level for horizontal leveling of the optical box
- Levelable 3-Wheel base system fitting for all common rail systems
- Levelable rail system for above and inground installation (3 m) as optional available accessory

## Digital headlight testing with MLD 815: intelligent, fast and precise

- Cross- and alignment laser for precise positioning
- For all light sources (Xenon, Bi-Xenon, LED, Bi-LED, Halogen) and glare-free high-beam systems (Dynamic Light Assist - DLA, Matrix, ILS Ford)
- All types of vehicles (passenger cars, trucks, motorcycles)
- All types of headlights (main headlights, fog lamps, auxiliary lamps)
- CMOS camera for real-time digital image processing
- Built-in printer
- Measurement results in real time
- Comparison between measured and limit values and unambiguous red/green evaluation
- Precise definition of the cut-off line without disrupting blue fringe
- Digital LCD colour display (5.7") with 262,000 colours
- Touch-screen function (operation with gloves is possible)
- Intuitive and simple user guidance

- Visual and acoustic signals support the measurement procedure
- Menu featuring 7 languages
- Operating panel can be rotated by 180° for different areas of application (e.g. for general inspections or for the adjustment at the workshop)
- Independent operation thanks to battery - Storage battery Alignment laser: 3 x Mignon AA 1.5 V
- Measuring height (optical center): 24 - 145 cm
- Measured values: Horizontal and vertical deviation (pitch angle), intensity, roll angle, yaw angle
- Digital precision: +/- 1 cm on a 10-meter measuring distance

## Test results via WLAN with quick and aptly arranged results on the PC

- Optional: visualization on the workshop computer
- Displaying of the cut-off line on the PC monitor or TFT screen
- Data transfer to PC via WLAN
- User interface simplifies intuitive use
- Database function
- Printing and archiving
- Adjustment of the colour scheme by the user: Light/dark background depending on the lighting conditions
- Workshop Network Connectivity: Supports Bosch Connected Repair, ASA Network Compatibility is guaranteed

Certificate: CE, TÜV, EMC, FCC, FDA

# Headlight testing device MLD 815 | with inclinometer

Beissbarth MLD 815 - Digital headlight measurement and adjustment

Article number: 1 692 104 356



## German Road Traffic Type-Approval Law StVZO § 29 general-inspection headlight-test directive: MLD 815 can be calibrated according to the legal requirements

- TÜV certificate in line with StVZO § 50 - TPN 2023-05-2208484: MLD 815 is TÜV-certified by prototype technical release examination in accordance with the directives for testing headlight adjustment/test equipment (German Road Traffic Type-Approval Law StVZO §50 paragraph 5).
- The alignment (leveling) of the MLD 815 on the testing bay corresponds to the latest requirements.
- Two-dimensional spirit level for horizontal leveling of the optical box
- Levelable 3-Wheel base system fitting for all common rail systems
- Levelable rail system for above and inground installation (3 m) as optional available accessory

## Digital headlight testing with MLD 815: intelligent, fast and precise

- Cross- and alignment laser for precise positioning
- For all light sources (Xenon, Bi-Xenon, LED, Bi-LED, Halogen) and glare-free high-beam systems (Dynamic Light Assist - DLA, Matrix, ILS Ford)
- All types of vehicles (passenger cars, trucks, motorcycles)
- All types of headlights (main headlights, fog lamps, auxiliary lamps)
- CMOS camera for real-time digital image processing
- Built-in printer
- Measurement results in real time
- Comparison between measured and limit values and unambiguous red/green evaluation
- Precise definition of the cut-off line without disrupting blue fringe
- Digital LCD colour display (5.7") with 262,000 colours

- Touch-screen function (operation with gloves is possible)
- Intuitive and simple user guidance
- Visual and acoustic signals support the measurement procedure
- Menu featuring 7 languages
- Operating panel can be rotated by 180° for different areas of application (e.g. for general inspections or for the adjustment at the workshop)
- Independent operation thanks to battery - Storage battery Alignment laser: 3 x Mignon AA 1.5 V
- Measuring height (optical center): 24 - 145 cm
- Measured values: Horizontal and vertical deviation (pitch angle), intensity, roll angle, yaw angle
- Digital precision: +/- 1 cm on a 10-meter measuring distance

## Test results via WLAN with quick and aptly arranged results on the PC

- Optional: visualization on the workshop computer
- Displaying of the cut-off line on the PC monitor or TFT screen
- Data transfer to PC via WLAN
- User interface simplifies intuitive use
- Database function
- Printing and archiving
- Adjustment of the colour scheme by the user: Light/dark background depending on the lighting conditions
- Workshop Network Connectivity: Supports Bosch Connected Repair, ASA Network Compatibility is guaranteed

Certificate: CE, TÜV, EMC, FCC, FDA

# Headlight testing device MLD 9000 | without inclinometer

Beissbarth MLD 9000 - Digital headlight measurement and adjustment

Article number: 1 692 104 354



## Digital headlight testing with MLD 9000: intelligent, fast and precise

- Precise green alignment lasers for accurate alignment with the vehicle. Green laser diodes are particularly well visible to the human eye because the eye has its maximum spectral sensitivity in the green range
- Cross laser function for precise positioning in the center of the headlight
- For all light sources (Xenon, Bi-Xenon, LED, Bi-LED, Halogen) and glare-free high-beam systems (Dynamic Light Assist - DLA, Matrix1, HD-Matrix2, ILS Ford)
- All types of vehicles (passenger cars, trucks, motorcycles)
- All types of headlights (main headlights, fog lamps, auxiliary lamps)
- High-resolution (5 megapixel) CMOS camera for real-time digital image processing
- Measurement results in real time optimized with live images
- Comparison between measured and limit values and unambiguous red/green evaluation
- Saving and archiving of the measured values in database
- Reporting of the measurement result possible via PDF
- Time-saving quick measurement functionality
- Precise definition of the cut-off line without disrupting blue fringe
- Workshop-proof touch-screen display (7")
- Continuously swiveling display for a variety of applications (such as the MOT for testing or in the workshop for adjustment) and for adapting to the local lighting conditions
- Intuitive and simple user guidance
- Visual and acoustic signals support the measurement procedure
- Independent operation thanks to battery
- Measured values: Horizontal and vertical deviation (pitch angle), intensity, roll angle, yaw angle
- Ports: LAN, USB, RS232
- Live firmware update possible

- Optional PC software to display the measurement on the test lane PC

## Highest mechanical precision and long-life cycle (suitable for future legal requirements):

- A new developed torsion-free and specially hardened aluminum column
- Easy to use, robust sliding system for precise height adjustment and comfortable working
- Robust and durable counter weight system with toothed belt
- Determination of the headlight installation height via adjustable, specially made aluminum scale or use of the optional height measuring sensor
- Optional: fine adjustment of the column with 1 angle minute accuracy

## Networking: Test results via WLAN with quick and aptly arranged results on the PC

- Save measurement printouts in a network folder
- Mirror software on a PC
- Integration with Bosch Connected Repair (fees apply for activation)
- ASA-ready

Certificate: CE, EMC, FCC, FDA

Please note: vehicle-specific light distribution patterns such as Ford Matrix, Skoda Matrix, or Skoda Kink need to be activated separately.

# Headlight testing device MLD 9000 | with inclinometer

Beissbarth MLD 9000 with inclinometer - Digital headlight measurement and adjustment

Article number: 1 692 104 355



## German Road Traffic Type-Approval Law StVZO § 29 general-inspection headlight-test directive: MLD 9000 can be calibrated according to the legal requirements

- TÜV certificate in line with StVZO § 50 - TPN 2023-05-2208486: MLD 9000 is TÜV-certified by prototype technical release examination in accordance with the directives for testing headlight adjustment/test equipment (German Road Traffic Type-Approval Law StVZO §50 paragraph 5).
- Two-dimensional spirit level for horizontal leveling of the optical box
- Levelable 3-Wheel base system fitting for all common rail systems

## Digital headlight testing with MLD 9000: intelligent, fast and precise

- The MLD 9000 (1692104355) supports leveling accuracy through software correction via a built-in inclinometer
- Precise green alignment lasers for accurate alignment with the vehicle. Green laser diodes are particularly well visible to the human eye because the eye has its maximum spectral sensitivity in the green range
- Cross laser function for precise positioning in the center of the headlight
- For all light sources (Xenon, Bi-Xenon, LED, Bi-LED, Halogen) and glare-free high-beam systems (Dynamic Light Assist - DLA, Matrix1, HD-Matrix2, ILS Ford)
- All types of vehicles (passenger cars, trucks, motorcycles)
- All types of headlights (main headlights, fog lamps, auxiliary lamps)
- High-resolution (5 megapixel) CMOS camera for real-time digital image processing
- Measurement results in real time optimized with live images
- Comparison between measured and limit values and unambiguous red/green evaluation

- Saving and archiving of the measured values in database
- Reporting of the measurement result possible via PDF
- Time-saving quick measurement functionality
- Precise definition of the cut-off line without disrupting blue fringe
- Workshop-proof touch-screen display (7")
- Continuously swiveling display for a variety of applications (such as the MOT for testing or in the workshop for adjustment) and for adapting to the local lighting conditions
- Intuitive and simple user guidance
- Visual and acoustic signals support the measurement procedure
- Independent operation thanks to battery
- Measured values: Horizontal and vertical deviation (pitch angle), intensity, roll angle, yaw angle
- Ports: LAN, USB, RS232
- Live firmware update possible

## Highest mechanical precision and long-life cycle (suitable for future legal requirements):

- A new developed torsion-free and specially hardened aluminum column
- Easy to use, robust sliding system for precise height adjustment and comfortable working
- Robust and durable counter weight system with toothed belt
- Determination of the headlight installation height via adjustable, specially made aluminum scale or use of the optional height measuring sensor
- Optional: fine adjustment of the column with 1 angle minute accuracy

## Networking: Test results via WLAN with quick and aptly arranged results on the PC

- Save measurement printouts in a network folder
- Mirror software on a PC

# Headlight testing device MLD 10

Beissbarth MLD 10 - Analog headlight testing device

Article number: 1 692 104 357



## Analog headlight testing device MLD 10: Basis for headlamp testing

- Cross- and alignment laser with turntable column for precise positioning
- For all light sources (Xenon, Bi-Xenon, LED, Bi-LED, Halogen)
- All types of vehicles (passenger cars, trucks, motorcycles)
- All types of headlights (main headlights, fog lamps, auxiliary lamps)
- Operating panel can be rotated by 180° for different areas of application (e.g. for general inspections or for the adjustment at the workshop)
- Measuring height (optical center): 25 - 150 cm
- Intensity measurement: Luxmeter with digital display
- Two-dimensional spirit level for horizontal leveling of the optical box
- Levelable 3-Wheel base system fitting for all common rail systems
- Levelable rail system for above and inground installation (3 m) as optional available accessory
- Complies with latest legal requirements in Europe

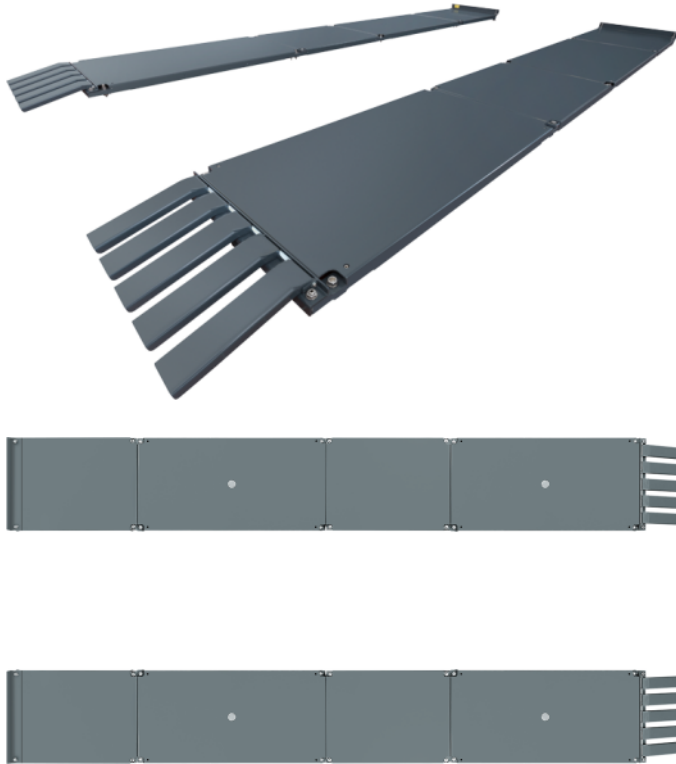
For rail operation a wheelhub shell set is required (item no. 1 692 105 188)

Certificates: CE, TÜV

## Levelable test bay LTB 100

*For headlight adjusting at a test bay without lift | Complies with German PTI directive and OE specifications*

**Article number: 1 692 100 030**



- Your test bay for headlight testing - Levelled according to the German PTI directive - In line with the guideline
- Ground-based solution as a leveled alternative to lifts(economical, space-saving, maintenance-free)
- Practical retrofit solution for uneven workshop floors
- Particularly suitable for installation on workshop pits
- Modular design
- Drive-through solutions for vehicle check-in (option)
- Compensation and fine adjustment by means of 4 wheel set-up elements (4-meter version)
- Robust thanks to KTL powder coating
- Wheel alignment checks for wheelbases up to 4325 mm (with extension)

### LTB 100: The right modules for your workshop

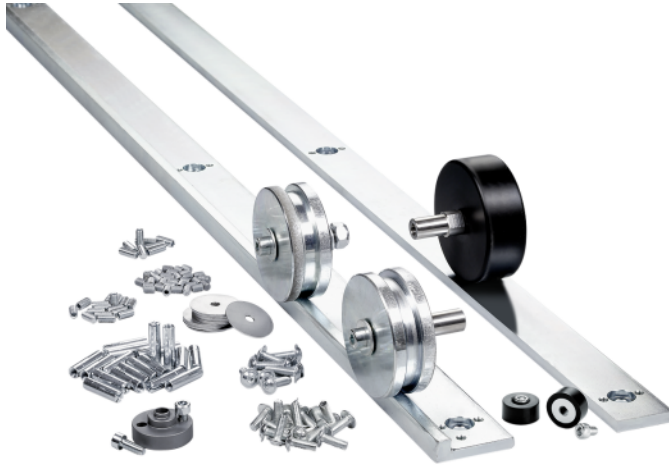
- Expandable by LTB modules e.g. - to a system length of 6 m (standard 4 m) for wheelbases from 1810 - 4325 mm - with drive-on ramp as a drive-through solution - for wheel alignment from small cars to vans



## Rail kit 3 m

*Rail kit for precise headlight adjustment (3 m)*

**Article number: 1 692 105 080**



- Levelable rail system for above and inground installation)
- Length: 3 meters
- Complies with the latest requirements placed on test areas in workshops: meets the requirements of vehicle manufacturers as well as the requirements of the general-inspection headlight-test directive
- Height differences of up to 30 mm can be compensated together with the headlight aiming device trolley
- Long lifetime
- High-quality, robust processing
- Precisely guided steel wheels: for precise measurements and adjustments, a one-time alignment with the vehicle is sufficient (time saving!)
- Steel wheels are included in scope of delivery
- Optional expandable to 4.5 m (see accessories list)

### Scope of delivery

- 2 pcs. Guide rail (L-profile): 1.5 m
- 2 pcs. Rail (flat profile): 1.5 m
- 1 pc. Guide wheel (swingarm - steel)
- 1 pc. Guide wheel (fixed - steel)
- 1 pc. Running wheel (swingarm - POM)
- 2 pc. rubber buffers as a stop
- Installation material: drill bush, socket head screw, flanged head screw, grub screw, washer



## Rail kit 3.3 m

*Rail kit for precise headlight adjustment for Mercedes-Benz workshops (3.3 m)*

**Article number: 1 692 105 134**



- Levelable rail system for above and inground installation
- Length: 3.3 meters. 2.5 meters length rail and 0.8 meters length extension
- Complies with the latest requirements placed on test areas in workshops: meets the requirements of vehicle manufacturers as well as the requirements of the general-inspection headlight-test directive
- Height differences of up to 30 mm can be compensated together with the headlight aiming device trolley
- Long lifetime
- High-quality, robust processing
- Precisely guided steel wheels: for precise measurements and adjustments, a one-time alignment with the vehicle is sufficient (time saving!)
- Steel wheels are included in scope of delivery
- Optional expandable (see accessories list)

### Scope of delivery

- 1 pc. Guide rail (L-profile): 2.5 m
- 1 pc. Guide rail (L-profile): 0.8 m
- 1 pc. Rail (flat profile): 2.5 m
- 1 pc. Rail (flat profile): 0.8 m
- 1 pc. Guide wheel (swingarm - steel)
- 1 pc. Guide wheel (fixed -steel)
- 1 pc. Running wheel (swingarm - POM)
- 2 pc. rubber buffers as a stop
- Installation material: drill bush, socket head screw, flanged head screw, grub screw, washer

## Extension kit for rail kit | 1.5 m

*Extension kit for rail base kit (3 m)*

**Article number: 1 692 105 112**



### Scope of delivery

- 1 pc. Guide rail (L-profile): 1.5 m
- 1 pc. Rail (flat profile): 1.5 m
- Installation material: drill bush, socket head screw, flanged head screw, grub screw, washer

# Wheelhub shell for rail system

Article number: 1 692 105 188

## Cover for headlight testing devices

Article number: 1 692 105 079



- Dust protection
- Protection against direct sunlight



## Cover for MLD 9000

*Cover for headlight testing device MLD 9000*

**Article number: 1 692 105 201**

- Dust protection
- Protection against direct sunlight

## Height-messuring sensor | for MLD 6xx and 8xx

*Automatic detection of the headlight installation height for MLD 6xx and 8xx*

**Article number: 1 692 105 066**



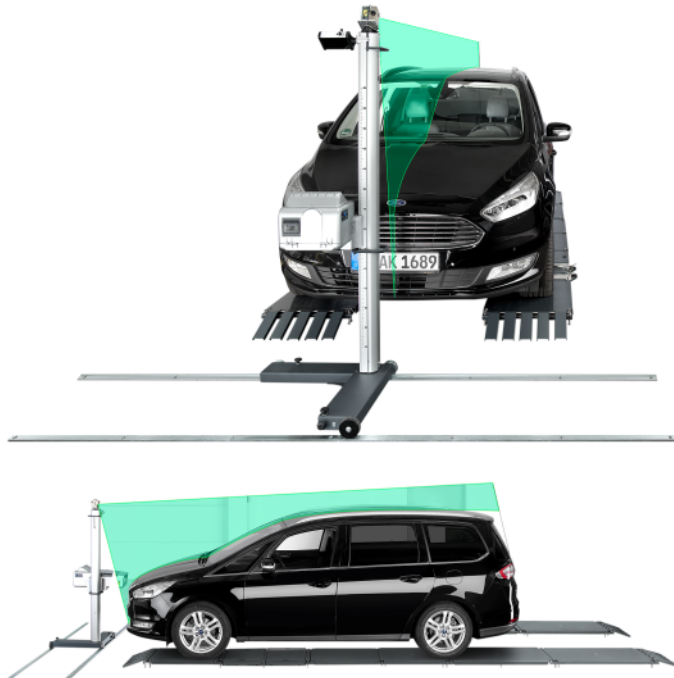
- Automatic detection of the headlight installation height
- Automatic display of the measured height value on the device display
- Installation height value is shown in the report

Note: for MLD 6xx and 8xx only

## Alignment kit for alignment on the vehicle center line Ford requirement | for MLD 815

*Exact alignment to the vehicle center line*

**Article number: 1 692 105 180**



- Exact alignment to the vehicle center line: with laser module and rear target post
- Designed for Ford vehicles with glare-free high beam, usable for all manufacturers vehicles to increase the precision
- Attached to the rear of the vehicle using magnets or suction cups
- Fine adjustment for exact positioning to the vehicle center
- High quality, highly visible, green vertical laser
- Low laser class - 1M

Note: Rail system is mandatory to use this alignment solution (Ford requirement)

### Scope of delivery

- Laser module P-Assist S5 (item no. 1 690 381 124)
- Laser holder (item no. 1 692 105 141)
- Alignment pendulum with magnets and suction cups (item no. 1 692 105 142)

## PC Software Iperform - Headlight

*Test results via WLAN with quick and aptly arranged results on the PC*

**Article number: 1 692 105 145**



- Displaying of the cut-off line on the PC monitor or TFT screen
- Data transfer to PC via Bluetooth®
- User interface simplifies intuitive use
- Database function
- Printing and archiving
- Adjustment of the colour scheme by the user: Light/dark background depending on the lighting conditions
- Workshop Network Connectivity: Supports Bosch Connected Repair, ASA Network Compatibility is guaranteed

### Scope of delivery

- Bluetooth module for the MLD 815 (PC side Bluetooth module is not included)
- USB stick with installation file and video instructions
- USB-RS232 cable: Firmware update is possible exclusively with cable connections
- License key for software activation



## Alignment kit for alignment on the vehicle center line Ford requirement | for MLD 9000

*Exact alignment to the vehicle center line*

**Article number: 1 692 105 252**

- Exact alignment to the vehicle center line: with laser module and rear target post
- Designed for Ford vehicles with glare-free high beam, usable for all manufacturers vehicles to increase the precision
- Attached to the rear of the vehicle using magnets or suction cups
- Fine adjustment for exact positioning to the vehicle center
- High quality, highly visible, green vertical laser
- Low laser class - 1M

Note: Rail system is mandatory to use this alignment solution (Ford requirement)

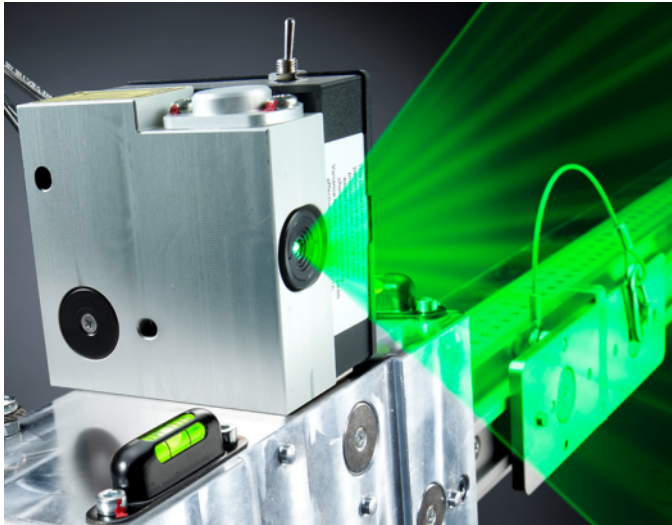
### **Scope of delivery**

- Laser holder (item no. 1 692 105 141)
- Alignment pendulum with magnets and suction cups (item no. 1 692 105 251)

Note: The laser module P-Assist S5 (item no. 1 690 381 124) has to be purchased separately.

## P-Assist laser module for symmetry alignment

Article number: 1 690 381 124



## Height-measuring sensor | for MLD 9000

*Automatic detection of the headlight installation height for MLD 9000*

**Article number: 1 692 105 278**



- Automatic detection of the headlight installation height
- Automatic display of the measured height value on the device display
- Installation height value is shown in the report

Note: for MLD 9000 only

## Matrix 2 Upgrade | for MLD 815

*Unlocks the Matrix 2 headlight option*

**Article number: 1 692 105 269**



- Unlocks the Matrix 2 headlight adjustment option

### Scope of delivery:

- Key Card with access code for online download



## Ford Matrix | for MLD 815

*Unlocks the adjustment of Matrix headlights for Ford vehicles on MLD 815*

**Article number: 1 692 105 288**



### Scope of delivery:

- Key Card with access code for online download

Only for MLD 815

## Skoda Function | for MLD 815

*Unlocks the Matrix and Kink (L-Shape) headlight option for Skoda vehicles on MLD815*

**Article number: 1 692 105 289**



### Scope of delivery:

- Key Card with access code for online download

Only for MLD 815

## CoRe Function | for MLD 9000

*Unlocks the Bosch Connected Repair (CoRe) function*

**Article number: 1 692 105 281**



### Scope of delivery:

- Key Card with access code

Only for MLD 9000

## CoRe Function + Wifi stick | for MLD 9000

*Unlocks the Bosch Connected Repair (CoRe) function*

**Article number: 1 692 105 282**



### Scope of delivery:

- Key Card with access code
- Wifi stick

Only for MLD 9000



## Lane extension for LTB 100 | 2 m

Article number: 1 692 100 031



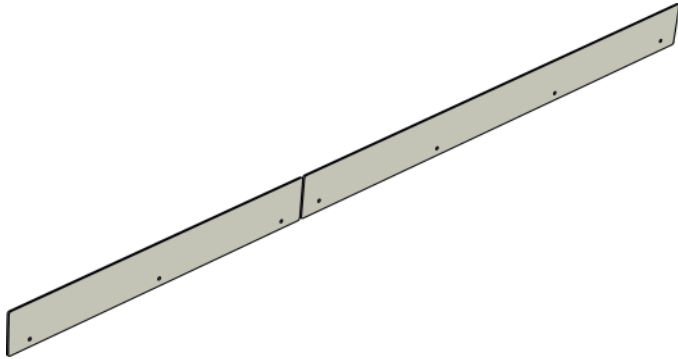
## Pit drive-in protection for LTB 100 | 4 m

Article number: 1 692 100 033



## Extension of pit drive-in protection for LTB 100 | 2 m

Article number: 1 692 100 037



## Installation kit for LTB 100/300

*Drilling patterns with carrying pliers | incl. transport box*

**Article number: 1 692 102 204**



## Drive-off ramps set for LTB 100/300 | 2 pcs.

*incl. Instalation materials*

**Article number: 1 692 100 032**



## Floor adapter for LTB 100/300

**Article number: 1 690 701 506**



- Floor adapter - Levelled Test Bay LTB 100/300
- For attachment of Easy 3D sensor heads on levelled test bays LTB 100 and LTB 300
- Position of sensor head is adjustable in vehicle direction via rail system

**Scope of delivery:**

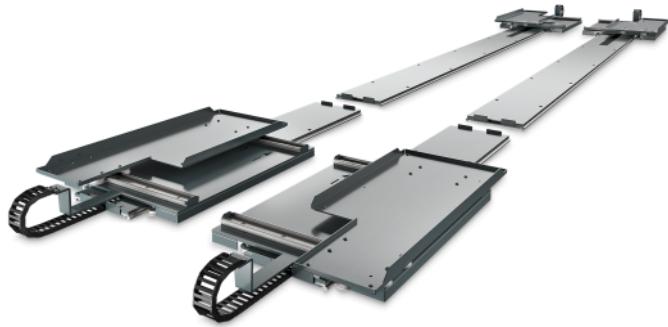
- 2 x Floor adapter



## SmartLink adapter for LTB 300 / Pit and floor mounting

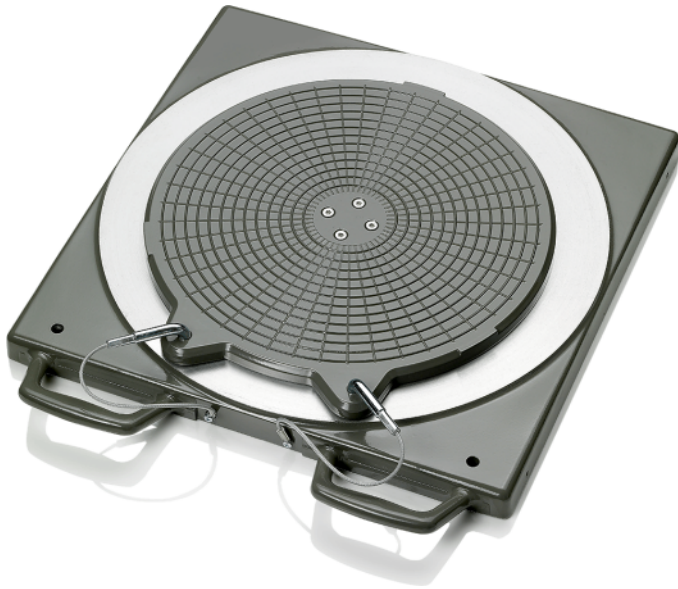
*SmartLink adapter for LTB 300 or for pit and floor mounting*

**Article number: 1 690 900 014**



## Mechanical aluminum turntable Standard

Article number: 1 690 501 001



- Very high quality and lifetime in workshop environment

### Scope of delivery:

- 1 x Mechanical turntable Standard

## Filling piece for aluminum turntable

Article number: 1 690 702 082



### Scope of delivery:

- 1 x Filling piece

## Filling piece for aluminum precision turntable

*1x Precision filling piece for one precision turntable. Required quantity per turntable: 2*

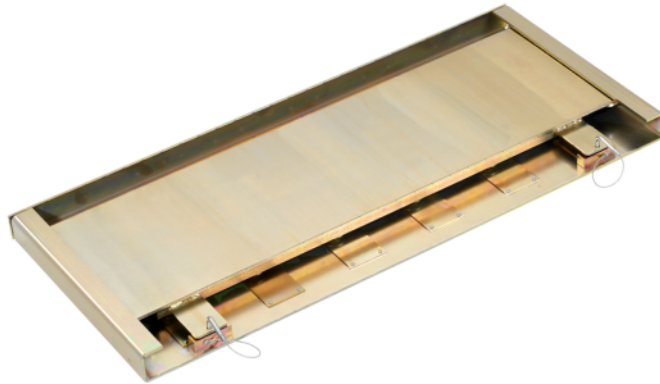
**Article number: 1 690 102 041**



## Sliding plate for rear axle | long

*Long sliding plate for rear axle, 1050 mm*

**Article number: 1 690 401 004**



- +/-2.5° rotating range

### Scope of delivery:

- 1 x Sliding plate long

Dimensions (LxWxH): 1050mm x 460mm x 50mm

Width of driving surface: 300mm

Length with drive-on and drive-off ramps 1690401008 (optional): 1453mm

## Digital

---



### Headlight testing device MLD 815 | without inclinometer

Article number: 1 692 104 358



### Headlight testing device MLD 815 | with inclinometer

Article number: 1 692 104 356



### Headlight testing device MLD 9000 | without inclinometer

Article number: 1 692 104 354



### Headlight testing device MLD 9000 | with inclinometer

Article number: 1 692 104 355

## Analog

---



### Headlight testing device MLD 10

Article number: 1 692 104 357

## Level Test Platforms

---

### Levelable test bay LTB 100

Article number: 1 692 100 030



# IMPORTANT NOTES

- Please notice: This list contains spare parts, too.
- Without instruction or assembly.
- Delivery ex works including packaging.

## VERSION 2025.06.06 – PRICES ON REQUEST

- Starting from now all previous lists will lose their validity.
- Please read our general terms and conditions in the latest version before ordering; to be found under [www.beissbarth.com](http://www.beissbarth.com).

### Beissbarth Automotive Testing Solutions GmbH

Friedrichshafener Str. 602  
82205 Gilching, Germany  
[sales@beissbarth.com](mailto:sales@beissbarth.com)  
[www.beissbarth.com](http://www.beissbarth.com)

Telefon: +49-(0)89-14901-0

Telefax: +49-(0)89-14901-246

**Order number** 1 693 602 008 **Print norm** BB XXX / XX.XX.2020 DE · Subject to technical and program changes, errors excepted.

