

Dialogannahme

WHEEL BALANCERS

Version 2025.06.06 – Prices on request

Start Line BA 201 | RAL7016 | 230V

Easy, quick, efficient: Start Line BA 201 with LED-display and internal measuring arm | Easy Fit | RAL7016

Article number: 1 694 400 026



Easy, quick, efficient: Start Line BA 201 with LED-display and internal measuring arm | Easy Fit | RAL7016

5 different balancing programs:

- DYN: Dynamic clip weights, on both sides of the rim. For balancing of steel rims.
- STA: Choose static balancing if no balancing weights are fitted to both sides of a wheel or to the wheel(s) on a motorbike.
- ALU1: Balancing of light alloy rims by attaching adhesive balance weights to the inner and outer side of a rim.
- ALU2: Attach clip-on balance weights and adhesive balance weights to inside of rim.
- ALUS: Adhesive balance weights for any location on inside of rim

Rim distance, rim diameter, and rim width need to be measured manually.

Scope of delivery:

- Large flange
- 4 cones
- Spacer plate
- Quick clamping nut
- Weight pliers
- Spring
- Weights 100g
- Rim width caliper
- Adhesive weights remover

Color: RAL7016

Start Line BA 201 | RAL5015 | 230V

Easy, quick, efficient: Start Line BA 201 with LED-display and internal measuring arm | Easy Fit | RAL5015

Article number: 1 694 200 949



Easy, quick, efficient: Start Line BA 201 with LED-display and internal measuring arm | Easy Fit | RAL5015

5 different balancing programs:

- DYN: Dynamic clip weights, on both sides of the rim. For balancing of steel rims.
- STA: Choose static balancing if no balancing weights are fitted to both sides of a wheel or to the wheel(s) on a motorbike.
- ALU1: Balancing of light alloy rims by attaching adhesive balance weights to the inner and outer side of a rim.
- ALU2: Attach clip-on balance weights and adhesive balance weights to inside of rim.
- ALUS: Adhesive balance weights for any location on inside of rim

Rim distance, rim diameter, and rim width need to be measured manually.

Scope of delivery:

- Large flange
- 4 cones
- Spacer plate
- Quick clamping nut
- Weight pliers
- Spring
- Weights 100g
- Rim width caliper
- Adhesive weights remover

Color: RAL5015

Wheel balancer G.20 LCD

Entry-level wheel balancer | mechanical clamping | automatic data arm | LCD control panel | Inside line laser | wheel guard with virtual sonar for steel rims

Article number: 1 692 501 007



Precise balancing in tight spaces: Compact car wheel balancer

Measurement and balancing:

- Balancing in 4.7 seconds
- Automatic stop of the wheel 15° before correction position
- LED for better visibility when placing weights
- Internal line laser for precise positioning of weights
- Split program for hiding weights behind different spokes

Wheel data recognition:

- Automatic data arm for measuring distance and diameter and weight placement
- Automatic selection of clip-on and adhesive weight program
- Highest measurement accuracy +/- 0.5g

Auto Adaptive Mode:

- Dynamic tolerance adjustment based on weight and size
- Minimizes remaining imbalance to eliminate smallest vibrations noticeable by the driver

Wheel guard with virtual sonar:

- Automatic recognition of rim width in steel rims
- Without manual input with measuring gauge or sonar
- Closing of wheel guard automatically starts balancing program

Robust LCD control panel:

- Easy operation
- Built workshop-tough
- Independent of user language

Quick clamping:

- Mechanical clamping with quick-lock nut
- Stable 40mm shaft
- Wheel weights up to 75kg
- Optional with wheel lift

Scope of delivery:

- 3 cones Ø45-111mm
- Quick-lock nut
- Clamping cap
- Pressure ring
- Rubber ring
- 60g counterweight
- Weight pliers

Wheel balancer G.20

Entry-level wheel balancer | mechanical clamping | automatic data arm | 17" touchscreen | Inside line laser | wheel guard with virtual sonar for steel rims

Article number: 1 692 501 000



Precise balancing in tight spaces: Compact car wheel balancer

Measurement and balancing:

- Balancing in 4.7 seconds
- Automatic stop of the wheel 15° before correction position
- LED for better visibility when placing weights
- Internal line laser for precise positioning of weights
- Split program for hiding weights behind different spokes

Wheel data recognition:

- Automatic data arm for measuring distance and diameter and weight placement
- Automatic selection of clip-on and adhesive weight program
- Highest measurement accuracy +/- 0.5g

Auto Adaptive Mode:

- Dynamic tolerance adjustment based on weight and size
- Minimizes remaining imbalance to eliminate smallest vibrations noticeable by the driver

Wheel guard with virtual sonar:

- Automatic recognition of rim width in steel rims
- Without manual input with measuring gauge or sonar
- Closing of wheel guard automatically starts balancing program

17" touchscreen monitor:

- Graphical step-by-step illustrations
- Simplifies correct balancing with guided processes
- Touchscreen usable with gloves on

Quick clamping:

- Mechanical clamping with quick-lock nut
- Stable 40mm shaft
- Wheel weights up to 75kg
- Optional with wheel lift

Scope of delivery:

- 3 cones Ø45-111mm
- Quick-lock nut
- Clamping cap
- Pressure ring
- Rubber ring
- 60g counterweight
- Weight pliers

Wheel balancer G.30

Entry-level wheel balancer | mechanical clamping | automatic data arm | 17" touchscreen | Inside line laser | wheel guard with sonar for steel and alloy wheels

Article number: 1 692 501 001



Precise balancing in tight spaces: Compact car wheel balancer

Measurement and balancing:

- Balancing in 4.7 seconds
- Automatic stop of the wheel 15° before correction position
- LED for better visibility when placing weights
- Internal line laser for precise positioning of weights
- Split program for hiding weights behind different spokes

Wheel data recognition:

- Automatic data arm for measuring distance and diameter and weight placement
- Automatic selection of clip-on and adhesive weight program
- Highest measurement accuracy +/- 0.5g

Auto Adaptive Mode:

- Dynamic tolerance adjustment based on weight and size
- Minimizes remaining imbalance to eliminate smallest vibrations noticeable by the driver

Wheel guard with integrated sonar:

- Automatic recognition of rim width in steel and aluminium rims
- Without manual input with measuring gauge
- Closing of wheel guard automatically starts balancing program

17" touchscreen monitor:

- Graphical step-by-step illustrations
- Simplifies correct balancing with guided processes
- Touchscreen usable with gloves on

Quick clamping:

- Mechanical clamping with quick-lock nut
- Stable 40mm shaft
- Wheel weights up to 75kg
- Optional with wheel lift

Scope of delivery:

- 3 cones Ø45-111mm
- Quick-lock nut
- Clamping cap
- Pressure ring
- Rubber ring
- 60g counterweight
- Weight pliers

Wheel balancer G.30P

Entry-level wheel balancer | pneumatic clamping | automatic data arm | 17" touchscreen | Inside line laser | wheel guard with sonar for steel and alloy wheels

Article number: 1 692 501 013



Precise balancing in tight spaces: Compact car wheel balancer

Measurement and balancing:

- Balancing in 4.7 seconds
- Automatic stop of the wheel 15° before correction position
- LED for better visibility when placing weights
- Internal line laser for precise positioning of weights
- Split program for hiding weights behind different spokes

Wheel data recognition:

- Automatic data arm for measuring distance and diameter and weight placement
- Automatic selection of clip-on and adhesive weight program
- Highest measurement accuracy +/- 0.5g

Auto Adaptive Mode:

- Dynamic tolerance adjustment based on weight and size
- Minimizes remaining imbalance to eliminate smallest vibrations noticeable by the driver

Wheel guard with integrated sonar:

- Automatic recognition of rim width in steel and aluminium rims
- Without manual input with measuring gauge
- Closing of wheel guard automatically starts balancing program

17" touchscreen monitor:

- Graphical step-by-step illustrations
- Simplifies correct balancing with guided processes
- Touchscreen usable with gloves on

Quick clamping:

- Pneumatic clamping with 250kg clamping force
- Ensures consistent clamping for all four wheels
- Stable 40mm shaft
- Wheel weights up to 75kg
- Optional with wheel lift

Scope of delivery:

- 3 cones Ø45-111mm
- Quick-lock sleeve
- Pressure ring
- Rubber ring
- 60g counterweight
- Weight pliers

Wheel balancer G.50 LCD

High-volume workshop wheel balancer | mechanical clamping | automatic data arm | LCD control panel | spot laser | wheel guard with sonar for steel and aluminum wheels | auto stop function | One Plane Balancing

Article number: 1 692 501 009



Eliminates vibrations day-in day-out: Wheel balancer for intensive use

Measurement and balancing

- Balancing in 4.7 seconds
- Automatic stop of the wheel in exact correction position
- LED for better visibility when placing weights
- Internal line laser for precise positioning of weights
- Split program for hiding weights behind different spokes

Wheel data recognition

- Automatic data arm for measuring distance and diameter and weight placement
- Automatic selection of clip-on and adhesive weight program
- Highest measurement accuracy +/- 0.5g

Auto Adaptive Mode

- Dynamic tolerance adjustment based on weight and size
- Minimizes remaining imbalance to eliminate smallest vibrations noticeable by the driver

Wheel guard with integrated sonar

- Automatic recognition of rim width in steel and aluminium rims
- Without manual input with measuring gauge
- Closing of wheel guard automatically starts balancing program

Robust LCD control panel:

- Easy operation
- Built workshop-tough
- Independent of user language

Quick clamping

- Mechanical clamping with quick-lock nut
- Stable 40mm shaft
- Wheel weights up to 75kg
- Optional with wheel lift

One Plane Balancing

- Eliminates dynamic imbalance with only one weight instead of two
- Fewer correction positions on the rim
- Less consumption of weights

Scope of delivery

- 4 cones Ø45-111mm
- Quick-lock nut
- Clamping cap
- Pressure ring
- Rubber ring
- 60g counterweight
- Weight pliers

Please note: an upgrade with runout sonar is only possible for G.50 balancers with Touch monitor.

Wheel balancer G.50

High-volume workshop wheel balancer | mechanical clamping | automatic data arm | 19" touchscreen | spot laser | wheel guard with sonar for steel and aluminum wheels | auto stop function | One Plane Balancing

Article number: 1 692 501 002



Eliminates vibrations day-in day-out: Wheel balancer for intensive use

Measurement and balancing

- Balancing in 4.7 seconds
- Automatic stop of the wheel in exact correction position
- LED for better visibility when placing weights
- Internal line laser for precise positioning of weights
- Split program for hiding weights behind different spokes

Wheel data recognition

- Automatic data arm for measuring distance and diameter and weight placement
- Automatic selection of clip-on and adhesive weight program
- Highest measurement accuracy +/- 0.5g

Auto Adaptive Mode

- Dynamic tolerance adjustment based on weight and size
- Minimizes remaining imbalance to eliminate smallest vibrations noticeable by the driver

Wheel guard with integrated sonar

- Automatic recognition of rim width in steel and aluminium rims
- Without manual input with measuring gauge
- Closing of wheel guard automatically starts balancing program

19" touchscreen monitor

- Graphical step-by-step illustrations
- Simplifies correct balancing with guided processes
- Touchscreen usable with gloves on

Quick clamping

- Mechanical clamping with quick-lock nut
- Stable 40mm shaft
- Wheel weights up to 75kg
- Optional with wheel lift

One Plane Balancing

- Eliminates dynamic imbalance with only one weight instead of two
- Fewer correction positions on the rim
- Less consumption of weights

Upgrade to Pro version (optional): Upgradable with sonar for runout measurement and Hubmatch function.

Scope of delivery

- 4 cones Ø45-111mm
- Quick-lock nut
- Clamping cap
- Pressure ring
- Rubber ring
- 60g counterweight
- Weight pliers

Wheel balancer G.50P

High-volume workshop wheel balancer | pneumatic clamping | automatic data arm | 19" touchscreen | spot laser | wheel guard with sonar for steel and aluminum wheels | auto stop function | One Plane Balancing

Article number: 1 692 501 003



Eliminates vibrations day-in day-out: Wheel balancer for intensive use

Measurement and balancing

- Balancing in 4.7 seconds
- Automatic stop of the wheel in exact correction position
- LED for better visibility when placing weights
- Internal line laser for precise positioning of weights
- Split program for hiding weights behind different spokes

Wheel data recognition

- Automatic data arm for measuring distance and diameter and weight placement
- Automatic selection of clip-on and adhesive weight program
- Highest measurement accuracy +/- 0.5g

Auto Adaptive Mode

- Dynamic tolerance adjustment based on weight and size
- Minimizes remaining imbalance to eliminate smallest vibrations noticeable by the driver

Wheel guard with integrated sonar

- Automatic recognition of rim width in steel and aluminium rims
- Without manual input with measuring gauge
- Closing of wheel guard automatically starts balancing program

19" touchscreen monitor

- Graphical step-by-step illustrations
- Simplifies correct balancing with guided processes
- Touchscreen usable with gloves on

Secure pneumatic clamping

- Pneumatic clamping with 250kg clamping force
- Ensures consistent clamping for all four wheels
- Wheel weights up to 75kg
- Optional with wheel lift

One Plane Balancing

- Eliminates dynamic imbalance with only one weight instead of two
- Fewer correction positions on the rim
- Less consumption of weights

Upgrade to Pro version (optional): Upgradable with sonar for runout measurement and Hubmatch function.

Scope of delivery

- 4 cones Ø45-111mm
- Pneumatic quick-lock sleeve
- Clamping cap for aluminum rims
- Pressure ring
- Rubber ring
- 60g counterweight
- Weight pliers

Wheel balancer G.60P Pro | Diagnostic

Diagnostic wheel balancer for professionals | pneumatic clamping system | automatic wheel recognition | 19" touchscreen | 3D laser scanner + outer line laser | wheel guard with sonar for steel and aluminum wheels | auto stop function | One-Plane Balancing | runout sonar | Hubmatching

Article number: 1 692 501 004



Diagnosis wheel balancer for passenger cars, designed by professionals for professionals, with fully automatic wheel detection:

Measuring and Balancing

- Balancing in 4.7 seconds
- Stops wheel automatically in exact correction position
- LED for increased visibility when placing weights
- Internal laser point for precise weight positioning
- External line laser for clip-on weights
- Split program for hiding weights behind spokes

3D Laser Scanner

- Contactless measurement of distance, rim width, and rim diameter
- Optimized for black and glossy rims
- No data arm or measuring gauge, everything fully automatic

Wheel Data Detection

- Fully automatic wheel data detection
- Automatic selection of clip-on and adhesive weights program
- Highest measurement accuracy of +/- 0.5g
- Balancing program starts automatically when closing the wheel guard

Auto Adaptive Mode

- Dynamic tolerance adjustment based on weight and size
- Minimizes remaining imbalance to eliminate smallest vibrations noticeable by the driver

Wheel guard with integrated sonar

- Automatic recognition of rim width in steel and aluminium rims
- Without manual input with measuring gauge
- Closing of wheel guard automatically starts balancing program

19" touchscreen monitor

- Graphical step-by-step illustrations
- Simplifies correct balancing with guided processes
- Touchscreen usable with gloves on

Secure pneumatic clamping

- Pneumatic clamping with 250kg clamping force
- Ensures consistent clamping for all four wheels
- Wheel weights up to 75kg
- Optional with wheel lift

One Plane Balancing

- Eliminates dynamic imbalance with only one weight instead of two
- Fewer correction positions on the rim
- Less consumption of weights

Pro Version with diagnostic function

- Automatic height deviation measurement with every balancing operation (4.7 seconds)
- Hubmatch: eliminates vibrations by rotating the tire on the wheel
- Eliminates even the slightest vibrations without the need for an expensive roller

Lieferumfang

- 4 cones Ø45-111mm

Wheel balancer G.90 HD

Truck wheel balancing machine with diagnostic function | Mechanical clamping | Automatic measuring arm | 19" touchscreen | Inner line laser | Wheel guard with sonar for steel and aluminum wheels | Height-adjustable flange

Article number: 1 692 501 005



Truck wheel balancing made easy: Wheel balancing machine for buses and trucks with height-adjustable flange

Height-adjustable flange:

- Easy clamping with the wheel on the ground instead of mid-air
- No separate wheel lift required
- Slide with only 59mm build height enables easier lateral movement

Measurement and balancing:

- Balancing of truck wheels in 8 seconds
- Wheel stopping in exact position via electromagnetic brake
- LED for enhanced visibility when placing weights
- Inner line laser for precise weight positioning
- Split program for dividing and hidden attachment of weights behind the spokes

Detection of wheel data:

- Automatic measuring arm for distance and diameter measurement and weight placement
- Extended measuring arm up to 32" rim diameter
- Automatic selection of clip-on or adhesive weight program
- Highest measurement accuracy +/- 0.5g

Wheel guard with integrated sonar:

- Automatic detection of wheel width for steel and aluminum wheels
- No manual input required with measuring gauge
- Balancing program starts automatically upon closing the wheel guard

19" touchscreen monitor:

- Graphical representation of all processes
- Simplifies correct balancing with guided workflows
- Operable even with gloves

Quick clamping:

- Mechanical clamping with quick clamping nut
- Stable 40mm shaft
- Handles wheel weights up to 200kg

Included in the delivery:

- Quick lock ring
- Clamping cap
- Pressure ring
- 4-arm and 5-arm centering kit 1692502026
- 300g counterweight
- Weight pliers
- Measuring gauge

Wheel balancer G.90 HD Pro | Diagnostic

Truck wheel balancing machine with diagnostic function | Mechanical clamping | Automatic measuring arm | 19" touchscreen | Inner line laser | Wheel guard with sonar for steel and aluminum wheels | Height-adjustable flange | Height deviation sonar | Hub matching

Article number: 1 692 501 006



Diagnostic wheel balancing machine for buses and trucks with height-adjustable flange

Height-adjustable flange:

- Easy clamping with the wheel on the ground instead of mid-air
- No separate wheel lift required
- Slide with only 59mm build height enables easier lateral movement

Measurement and balancing:

- Balancing of truck wheels in 8 seconds
- Wheel stopping in exact position via electromagnetic brake
- LED for enhanced visibility when placing weights
- Inner line laser for precise weight positioning
- Split program for dividing and hidden attachment of weights behind the spokes

Detection of wheel data:

- Automatic measuring arm for distance and diameter measurement and weight placement
- Extended measuring arm up to 32" rim diameter
- Automatic selection of clip-on or adhesive weight program
- Highest measurement accuracy +/- 0.5g

Wheel guard with integrated sonar:

- Automatic detection of wheel width for steel and aluminum wheels
- No manual input required with measuring gauge
- Balancing program starts automatically upon closing the wheel guard

19" touchscreen monitor:

- Graphical representation of all processes
- Simplifies correct balancing with guided workflows
- Operable even with gloves

Quick clamping:

- Mechanical clamping with quick clamping nut
- Stable 40mm shaft
- Handles wheel weights up to 200kg

Pro version with diagnostic function:

- Automatic runout measurement during each balancing operation
- Hub matching: eliminates vibrations by rotating the tire on the wheel
- Eliminates even the finest vibrations without the need for expensive load rollers

Included in the delivery:

- Quick lock ring
- Clamping cap
- Pressure ring
- 4-arm and 5-arm centering kit 1692502026
- 300g counterweight
- Weight pliers
- Measuring gauge

Rim width measurement arm Electronic | for MT 826 D

Article number: 1 695 600 598



External arm kit for measuring rim width | for MT 837 L / 857 L

Article number: 1 695 656 936



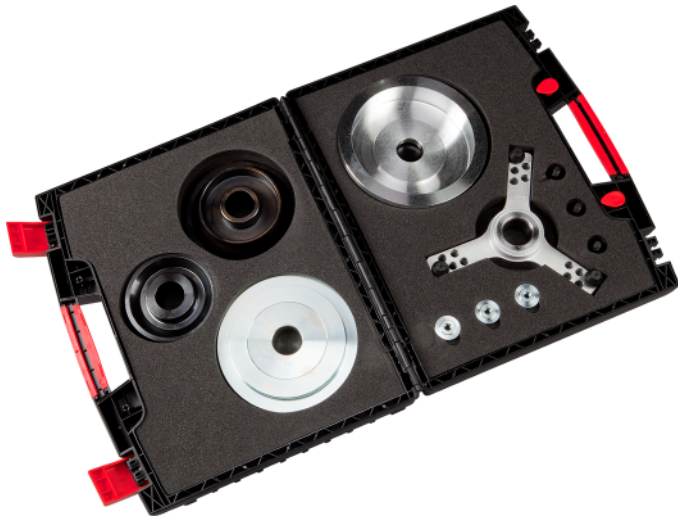
Sonar arm kit for MT 837 L / 857 L

Article number: 1 695 656 935



Flange case Light Truck

Article number: 1 695 656 569



Weight scraper

Article number: 1 695 656 585



Centering cone for Toyota Land Cruiser und Offroad-Fahrzeuge | Ø 95 - 132 mm

Article number: 1 695 653 449



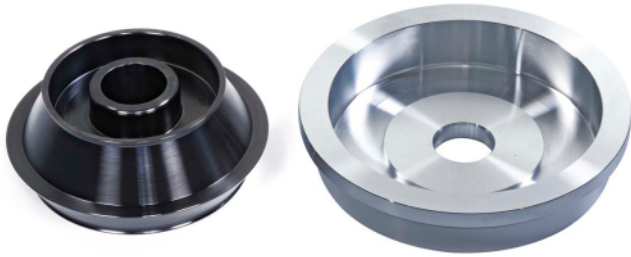
Centering cone Light Truck | Ø 122 - 174 mm

Article number: 1 695 606 300



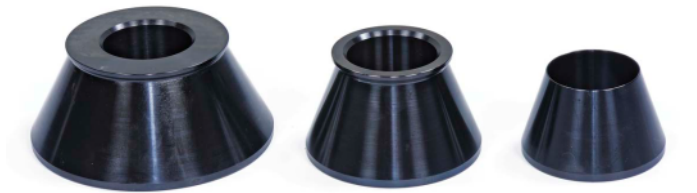
Centering cone set Light Truck | Ø 122 - 174 mm

Article number: 1 695 654 627



Centering cone set Ø 42 - 111.5 mm | 3 pcs.

Article number: 1 695 654 851



Centering cone set Ø 42 - 110 mm | 4 pcs.

Article number: 1 695 655 293



Centering cone set Light Truck | Ø 95 - 174 mm | 3 pcs.

Article number: 1 695 654 849



Cone spacer for truck cone 1695606300

Article number: 1 695 606 200



Alloy spacer Light Truck | Ø 40 mm

Article number: 1 695 600 061



Distance ring with magnets | for Off-Road cone from the back | 40 mm

Article number: 1 695 655 316



Polyamide spacer donut | for Off-Road | 40 mm

for use with distance ring 1695654895

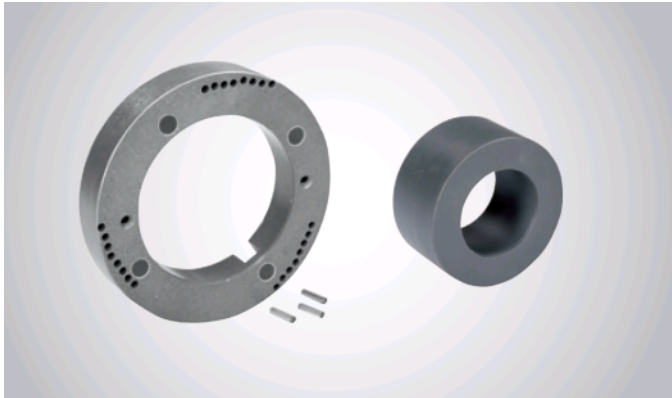
Article number: 1 695 654 895



Cone kit Off-Road | 40 mm

Incl. pins, distance ring and polyamide spacer

Article number: 1 695 901 667



Scope of delivery:

- 3 x Pins
- Distance ring with magnets (item no. 1 695 655 316)
- Polyamide spacer (item no. 1 695 654 895)

Universal flange Passenger car | for closed 3-, 4-, 5-hole rims

Infinitely variable adjustment | et al for Renault, Peugeot, Citroën | incl. 3 centering rings

Article number: 1 695 654 043



Quick bolt kit M10 x 1.25 mm

For 3-, 4-, 5-hole universal flange (item no. 1 695 654 043)

Article number: 1 695 612 100



Specific clamping plate set QuickPlate | variable | for 3-, 4-, 5-hole rims | 3 pcs.

Article number: 1 695 655 294



Scope of delivery:

- 3 x Specific clamping plate QuickPlate, variable - for 4-hole rims (item no. 1 695 655 295) - for 5-hole rims (item no. 1 695 655 296) - for 6-hole rims (item no. 1 695 655 297)

Head for Range-/Landrover | Ø 34.5 mm | 28 mm

Total length (incl. head) 80 mm

Article number: 1 695 655 311



Head short taper | Ø 24.5 mm | 38 mm

Total length (incl. head) 90 mm

Article number: 1 695 655 307



Certified weight for calibration 60 g

Article number: 1 695 654 376



Clamping hood large diameter

Article number: 1 695 653 888



Rubber cup for clamping hood large diameter

Article number: 1 695 624 800



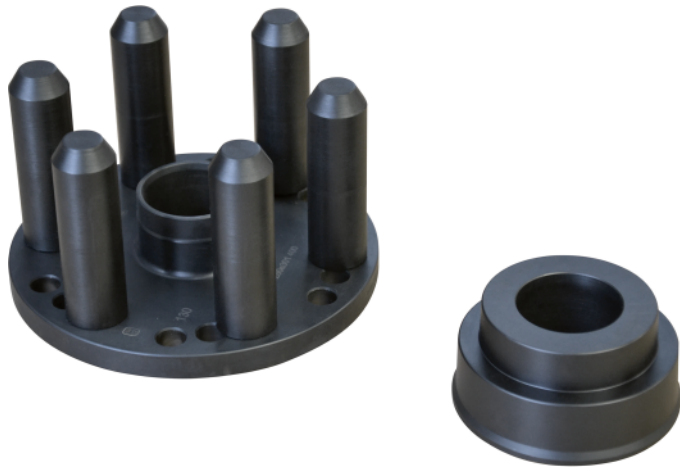
Special centering kit Standard | for GM / OPEL

Article number: 1 695 655 323



Centering kit Light Truck

Article number: 1 695 656 783



Special centering kit for BMW

PCD 4 x 100 | 5 x 120 | 5 x 112 / 120 mm

Article number: 1 695 656 822



Special centering kit for Mercedes-Benz / Smart

Article number: 1 695 655 326



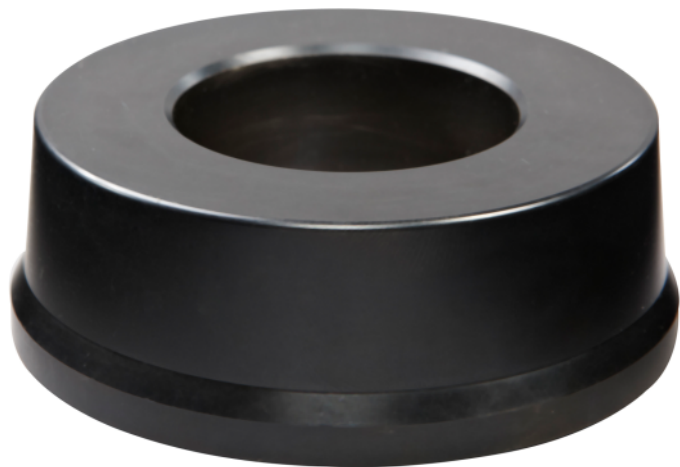
Centering sleeve f.e. Renault / Peugeot / Citroen | 55 / 60 / 65 mm

Article number: 1 695 655 781



Centering sleeve for Mini Countryman | 72.5 mm | 71.5 - 74.6 mm

Article number: 1 695 000 007



Centering sleeve for VW/Mercedes | 65/66,5/84 mm

Article number: 1 695 000 073

Centering cone i.e. Renault / Dacia | 50 - 60 / 66 / 71 mm

Article number: 1 695 656 571



Clamping plate TSP No. 2 | colour-coded | without studs | Ø 11 mm

Flange plate adaptor PCD 5 x 98 / 108 / 110 / 115 / 120.65 / 135 / 154.95 mm

Article number: 1 695 654 629



Clamping plate TSP No. 3 | colour-coded | without studs | Ø 11 mm

Flange plate adaptor PCD 5 x 100 / 112 / 114.3 / 120 / 127 / 130 / 139.7 / 150 / 165.1 mm

Article number: 1 695 654 630



Centering system DuoExpert | 3 collets | 54 - 78 mm

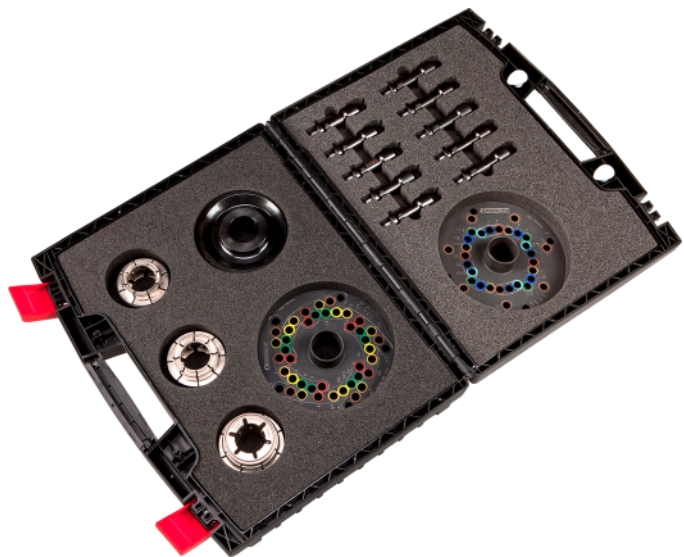
In a case

Article number: 1 695 656 698



Flange case Kit Duo Expert | for passenger cars | with pressure plates

Article number: 1 695 656 570



Plug-in stud III | rounded head | Ø 24.5 mm | 11 x 90 mm

Article number: 1 695 654 862



Plug-in stud V | short taper | Ø 22.5 mm | 11 x 100 mm

Article number: 1 695 654 921



Plug-in stud I | long taper | Ø 19 mm | 11 x 100 mm

Article number: 1 695 654 864



Plug-in stud II | short taper | Ø 24.5 mm | 11 x 100 mm

Article number: 1 695 654 626



Plug-in stud short taper | spring-loaded | Ø 24.5 mm | 100 mm

Article number: 1 695 656 834

Plug-in stud | long taper| Ø 24,5 mm | 12 x 80 mm

Article number: 1 695 654 553

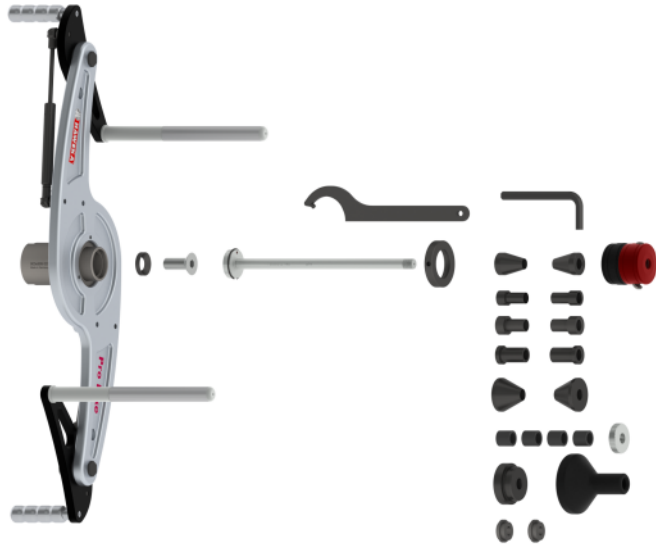


Plug-in stud Rounded head | Ø 22,5 mm | 120 mm

Article number: 1 692 500 200

Wheel centering kit for motorbikes | Conical |Basic | Ø 14 mm

Article number: 1 695 000 542



Wheel centering kit for motorbikes | ECO | Ø 14 mm

Article number: 1 695 654 718

Centering kit for BMW

Article number: 1 695 000 259



Centering shaft for motorbikes | Ø 14 mm | 233 mm

For conical shaft gripping

Article number: 1 695 604 700



Centering shaft for motorbikes | Ø 19 mm | 270 mm

For conical shaft gripping

Article number: 1 695 600 254



Centering shaft for motorbikes | Ø 10 mm | 177 mm

For conical shaft gripping

Article number: 1 695 653 430



Quick clamping unit Quick-Fix | for motorbikes | Ø 14 mm

Article number: 1 695 654 117



Quick clamping unit Quick-Fix | for probike | Ø 19 mm

Article number: 1 695 655 321



Adaptor kit for Harley Davidson | axle Ø 19 mm

Article number: 1 695 653 437

Centering kit for BMW | axle Ø 14 mm

Article number: 1 695 600 210



Adaptor for Ducati, Triumph | axle Ø 19 mm

Article number: 1 695 653 538



Centering kit for bike | BMW | axle Ø 19 mm

Article number: 1 695 600 209



Centering kit for BMW | Full set | axle Ø 14 mm

Article number: 1 695 000 296



Wheel lift | for wheel balancers

Article number: 1 695 601 012



Three arm flange for light trucks | incl. nuts and bolts

Article number: 1 695 653 420



Motorcycle Adapter | for BA 201

Article number: 1 695 600 479



Universal Adapter for BA 201

Used for clamping rims without a center hole

Article number: 1 695 600 480



Universal Adapter for BA 201

Used for clamping rims without a center hole mostly found in French cars

Article number: 1 695 600 481



Adapter kit for Mercedes-Benz Sprinter and VW Crafter

Article number: 1 695 000 074

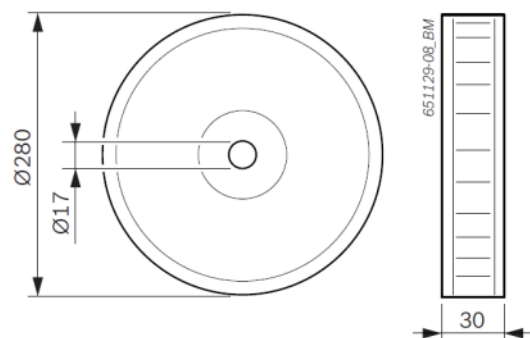
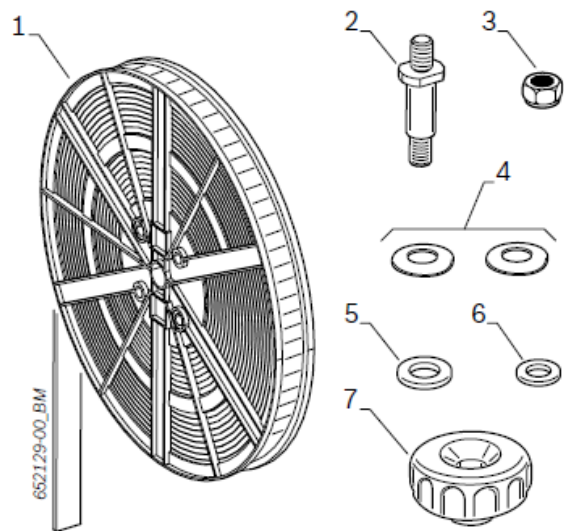
Printer | for MT Zero 6 & 8

Article number: 1 695 042 875



Holder for adhesive balance weight spool + adhesive balance weight spool | for MT Zero 6 & 8

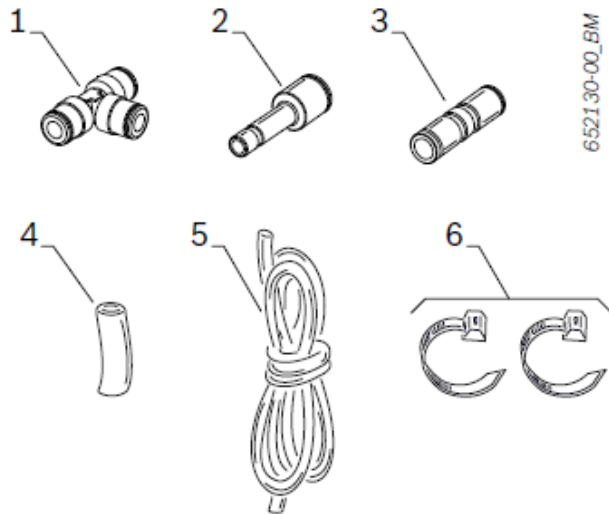
Article number: 1 695 656 872



Air connection kit for wheel lift 1695601012 | MTZero 6 & 8 Pneumatic for wheel lift | MTZero 6 & 8 Pneumatic

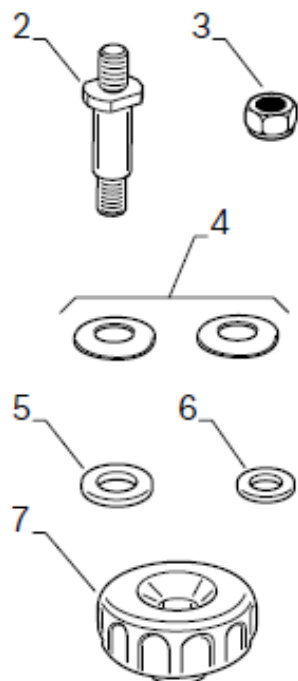
For connecting the wheel lift (1695601012) directly to the MT Zero AxxP (pneumatic)

Article number: 1 695 656 876



Holder for adhesive balance weight spool | MT Zero 6 & 8

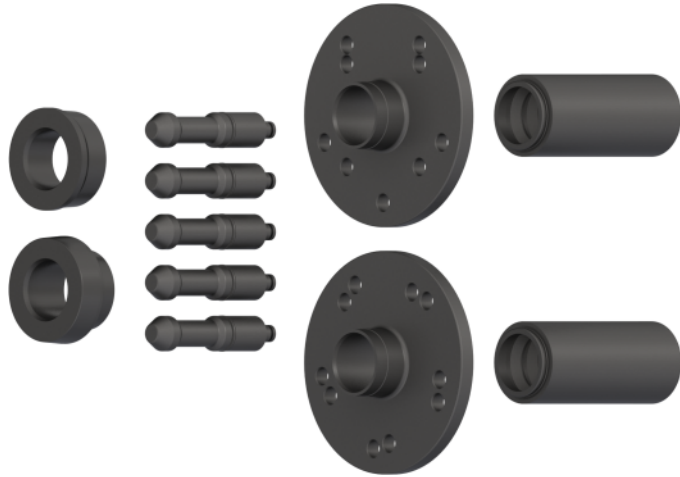
Article number: 1 695 656 877



Wheel centering kit for special pneumatic flange for BMW | MT Zero 6 & 8 Pneumatic

1x Centering sleeve $\varnothing 66,5\text{mm}$, 1x Centering sleeve $\varnothing 56-57/72,5-74\text{mm}$, 5x Centering bolt, spring-loaded, 100mm long, long taper, 1x Flange plate adaptor 4x100/5x120, 1x Flange plate adaptor 5x112/120, 2x Pressure piece pneumatic $\varnothing 40$,

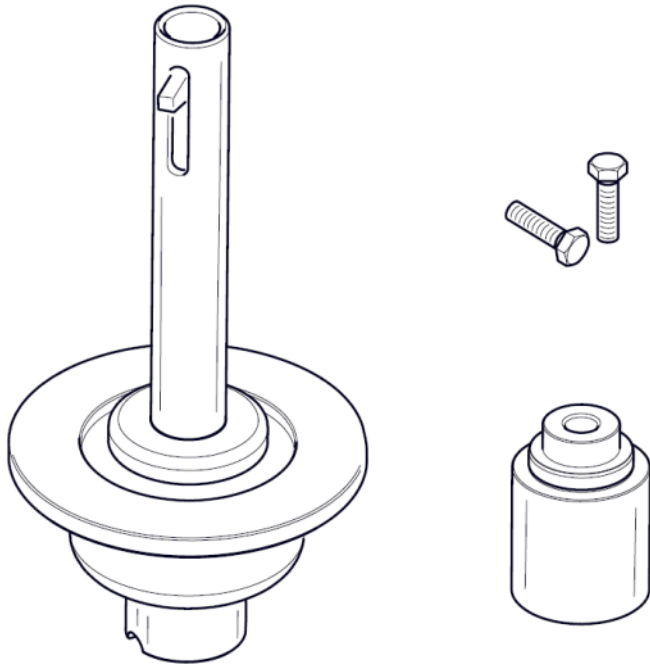
Article number: 1 695 657 004



- 1x Centering sleeve $\varnothing 66,5\text{mm}$
- 1x Centering sleeve $\varnothing 56-57/72,5-74\text{mm}$
- 5x Centering bolt, spring-loaded, 100mm long, long taper
- 1x Flange plate adaptor 4x100/5x120
- 1x Flange plate adaptor 5x112/120
- 2x Pressure piece pneumatic $\varnothing 40$

Special pneumatic flange for BMW | MT Zero 6 & 8 Pneumatisch

Article number: 1 695 657 006



60 g counter weight 60 g counter weight

Article number: 1 695 654 377



Clamp for counter-weights

Article number: 1 695 606 500



Width gauge

Article number: 1 695 602 700



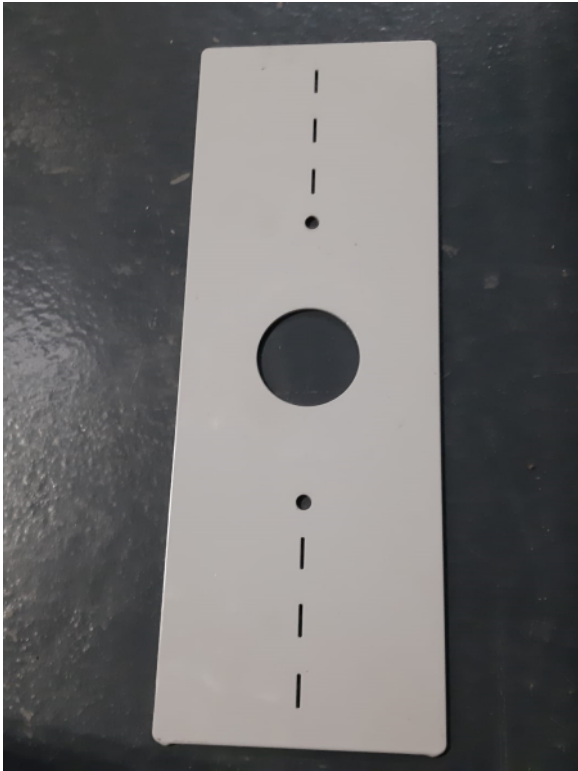
Weight position sensor

Article number: 1 695 629 400



Calibration plate | MT837/MT857

Article number: 1 695 600 938



Positioning laser with light ring | MTZero6

Article number: 1 695 654 994



Floor mounting parts set | MTZero6 | MTZero6

Article number: 1 695 655 582

Calibrating pin | MTZero6

Article number: 1 695 656 719



Quick-release coupling – MT ZERO 6 Touch AWxP | MTZero6/MTZero8 | MTZero6/MTZero8

Article number: 1 695 042 398



Cone holder | MTZero6/MTZero8

Article number: 1 695 627 500



Large flange | Start Line

Article number: 1 695 600 672

Small cone | Start Line

Article number: 1 695 600 673

Cone 2 | Start Line

Article number: 1 695 600 674

Cone 3 | Start Line

Article number: 1 695 600 675

Cone 4 | Start Line

Article number: 1 695 600 676

Spacer plate, large | Start Line

Article number: 1 695 600 678

Quick-action clamping nut | Start Line

Article number: 1 695 600 442

Wrench, waf 12 | Start Line

Article number: 1 695 600 665

Balance weight pliers | Start Line

Article number: 1 695 600 670

Spring | Start Line

Article number: 1 695 600 677

Weights 100 g | Start Line

Article number: 1 695 600 668

Measuring compass | Start Line

Article number: 1 695 600 671

Adhesive weights remover | Start Line

Article number: 1 695 600 667

Calibrating pin | MTZero6/MTZero8

Article number: 1 695 655 496

Accessories support | MT826 | MT826

Article number: 1 695 654 167

Mounting plate for monitor | MT826 | MT826

Article number: 1 695 905 164

Set clamping plate | for BMW

Set clamping plate + studs: - Clamping plate: 5x112mm + 5x120mm (1695600215) - Spring-loaded studs: 12x 100mm, long taper Ø24,5mm (1695656834)

Article number: 1 695 901 690



Universal flange | for light trucks and trucks

Article number: 1 695 636 500



- Basic centering device Tr40x3, conical
- Distance ring truck
- Basic truck adaptor
- 5x Centering bolt truck (standard)
- 5x Knurled nut M16
- 5-arm clamping star truck
- 4-arm clamping star truck
- Hexagon-socket-head-key SW14
- Hexagon-socket-head-key SW8
- Hexagon-socket-head-key SW5
- 2x Hexagon-socket-head-bolt M10x35
- 2x Hexagon-socket-head-bolt M6x25
- Clamping hood
- Wing nut Tr40x3
- Centering cone 198-225mm
- Centering cone 122-174mm
- Centering cone 88-132mm
- Centering cone 74-111,5mm
- Centering cone 54-79,5mm
- Centering cone 42-64,5mm

Truck flange Standard | with cones for outside clamping

Article number: 1 695 654 929

Truck flange Precision | with 4- and 5-arm centring system

Article number: 1 695 654 928

Quick lock-nut | MT795

Article number: 1 695 616 200

ProBike III Profi Kit Ø19

Article number: 1 695 657 042

ProBike Upgrade Kit 19mm

Article number: 1 695 657 086

Special cone for central hole 89 - 132.5mm

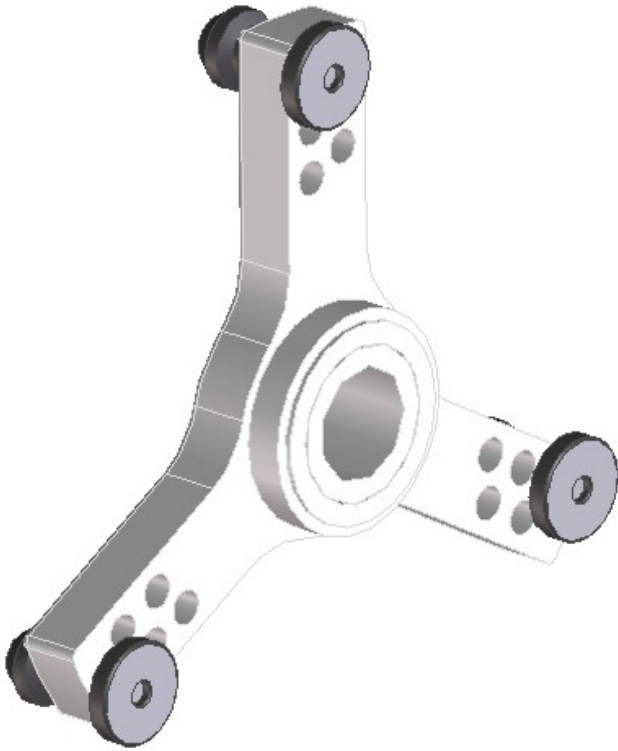
Only for machines with center clamping

Article number: 1 692 502 052



3-arm star adapter SR3 | for light trucks | Ø 161 / 170 / 184.15 / 205 / 222.25 / 245 mm

Article number: 1 692 502 038

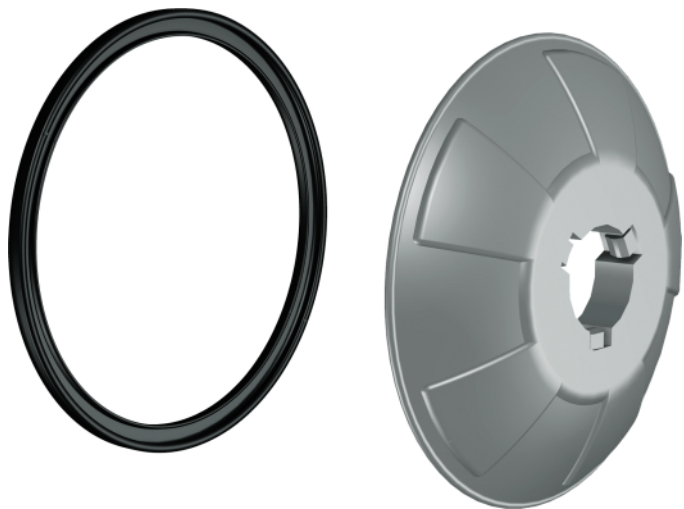


- 3-arm star adapter for light truck wheels with Ø 161 / 170 / 184.15 / 205 / 222.25 / 245 mm

Large clamping cap | for aluminium rims

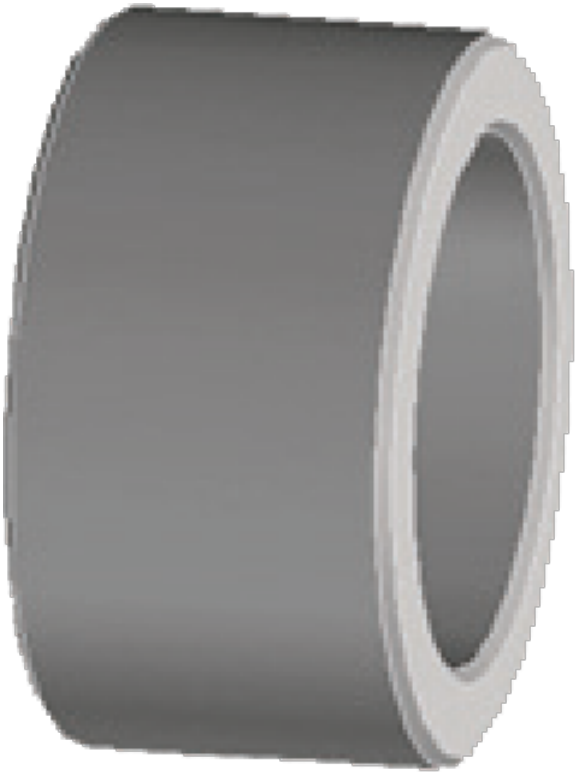
Large plastic cap with Polyurethane ring to protect aluminium rims.

Article number: 1 692 502 044



Spacer sleeve | for use with spacer 1692502029

Article number: 1 692 502 029



Distance ring 40mm | in combination with light truck cone 1692502047

Article number: 1 692 502 028



To be used in combination with light truck cone 1692502047 and spacer 1692502031. 40mm distance ring 1692502028 and spacer 1692502031 are mounted on the inside. The light truck cone is used to lock the wheel from the outside. Spacer can be mounted either way, as long as it fits the inside rim shape.

Spacer for wide rims | for use with spacer sleeve 1692502029

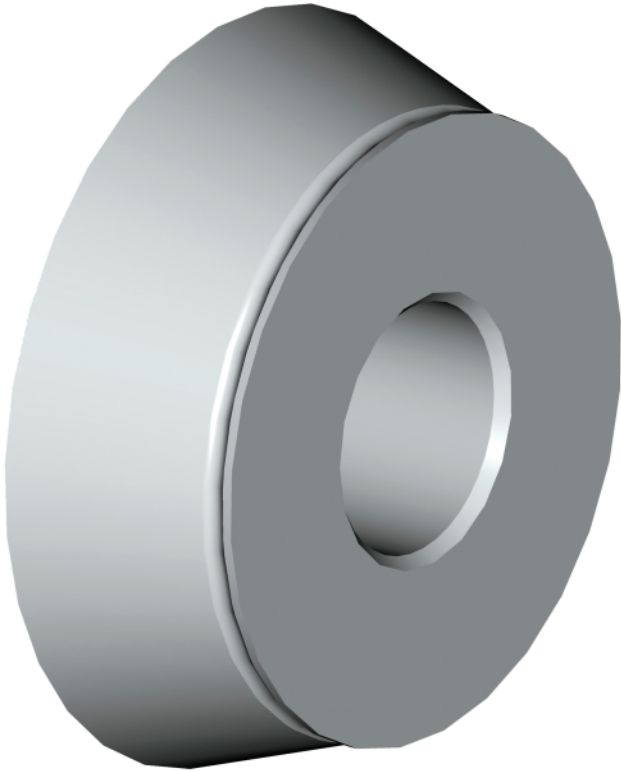
Article number: 1 692 502 036



Cone 4WD | Ø 101 - 119 mm

Special cone for vehicles with four-wheel-drive, Ø 101 - 119 mm

Article number: 1 692 502 035



Cone | for truck | 7.9" / 201 - 8.7" / 221 mm

Article number: 1 692 502 032



Cone | for German OEMs | Ø 56.5 / 57 / 66.5 / 70 - 72.5 mm

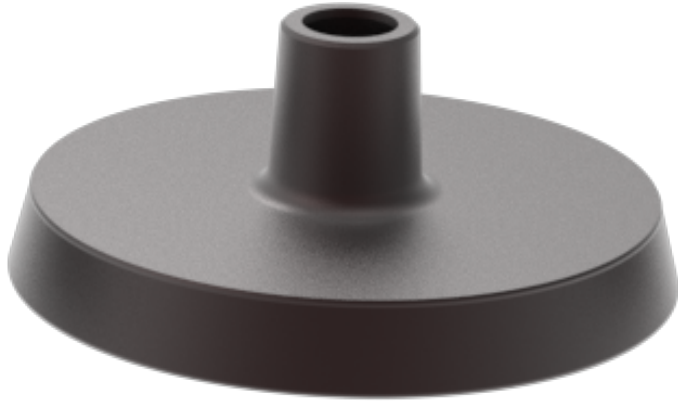
Article number: 1 692 502 049



- Stepped cone for German OEMs Ø 56.5 / 57 / 66.5 / 70 - 72.5 mm

Cone | for truck | 11" / 281 mm

Article number: 1 692 502 033



Cone | for light trucks and pick-ups | Ø 97 - 180 mm

Large cone for light trucks and pick-ups (Ø 97-180 mm). To be used with 36mm distance ring or 40mm distance ring and spacer

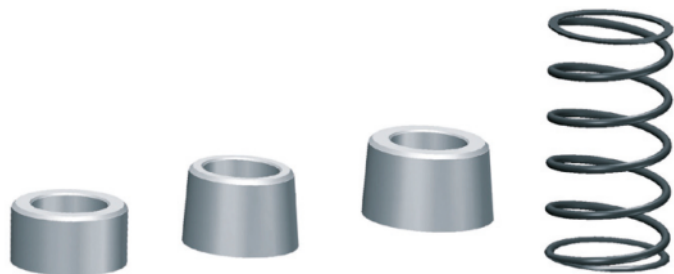
Article number: 1 692 502 047



Cones kit for Mercedes-Benz

Set consisting of 3 cones (Ø 57 / 66,5 / 84 - 85 mm) and a spring | comply with Mercedes-Benz requirements

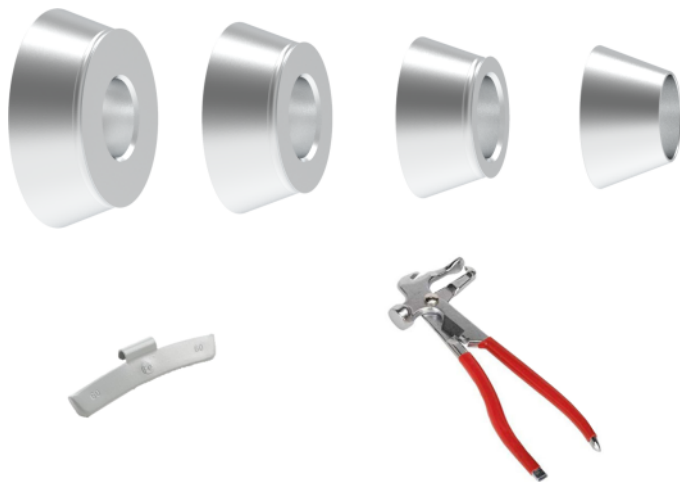
Article number: 1 692 502 030



Cones kit Ø 45 - 111 mm | 6 pcs.

Set consisting of 4 cones (Ø 45 - 111 mm), 60 g counter weight and a pincer hammer

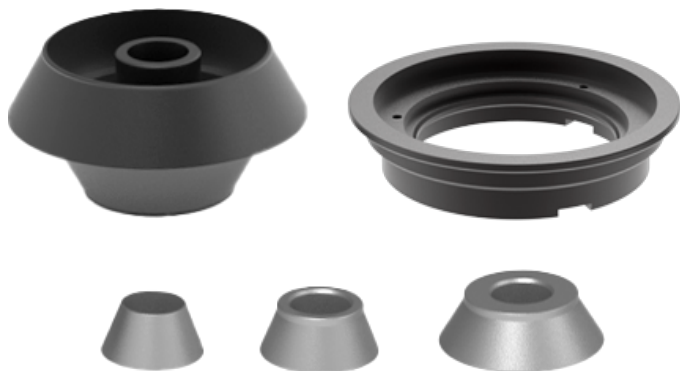
Article number: 1 692 502 043



Cones and clamping kit Passenger car | Ø 45 - 194 mm

For centering wheels with a central hole of Ø 45 - 194 mm | set consisting of 4 cones and 40mm distance ring

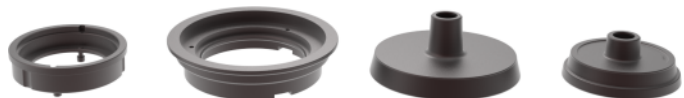
Article number: 1 692 502 027



Cones and clamping kit Truck | Ø 202 / 221 / 281 mm

For centering truck and bus wheels with a central hole of Ø 202 / 221 / 281 mm | set consisting of two truck cones, 40mm distance ring, and spacer

Article number: 1 692 502 025



Long stud bolt for Peugeot 406 | 1 Set = 5 pcs

Set consisting of 5 long stud bolts for the Peugeot 406 with aluminium rims | used in combination with universal adapter 1692502037

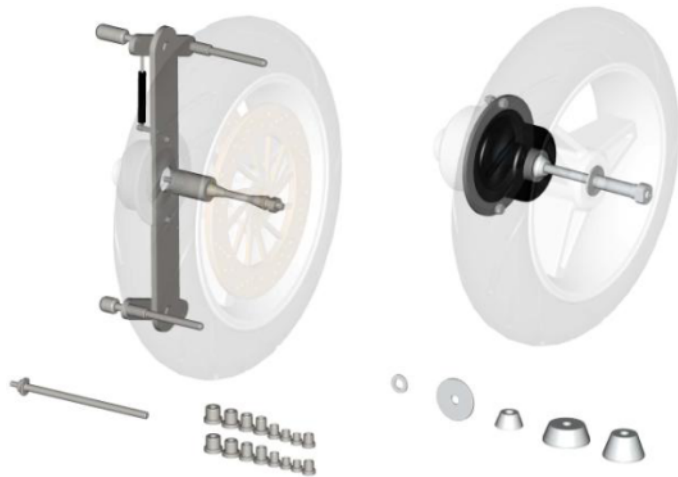
Article number: 1 692 502 054



Motorcycle and scooter adapter | Ø 15 - 35 mm

Universal motorcycle and scooter wheel adapter with bearing holes Ø 15 - 35 mm | Dynamically balanced

Article number: 1 692 502 073



Spacer | in combination with light truck cone 1692502047

Article number: 1 692 502 031



To be used in combination with light truck cone 1692502047 and spacer 1692502031. 40mm distance ring 1692502028 and spacer 1692502031 are mounted on the inside. The light truck cone is used to lock the wheel from the outside. Spacer can be mounted either way, as long as it fits the inside rim shape.

Cone | for central hole Ø 43 - 69 mm

Article number: 1 692 502 053



Special cone | for truck | for central hole 8.5" / 215.9 mm

Special cone for central hole \varnothing 202 / 214 mm (China) and 202 / 215.9 mm / 8.5" (USA)

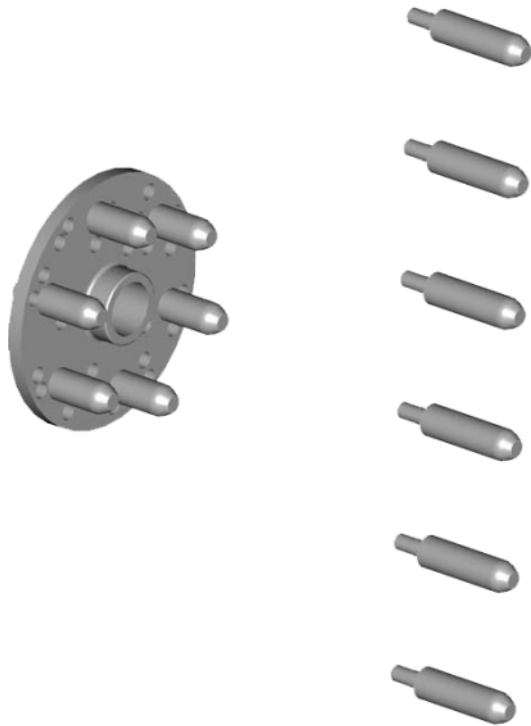
Article number: 1 692 502 034



Stud adapter kit USA | Manual | 5 x 101.6 / 139.7 / 165.1 mm | 6 x 139.7 / 114.3 mm | 4 x 165.1 / 170 mm | 3 x 130 mm

Includes 5 x long (80 mm) and 5 x short (50 mm) elastic studs

Article number: 1 692 502 060



- Stud adapter kit for high precision centering and protection of rims
- Studs and two washers ensure same pressure on all rims
- For manual clamping only

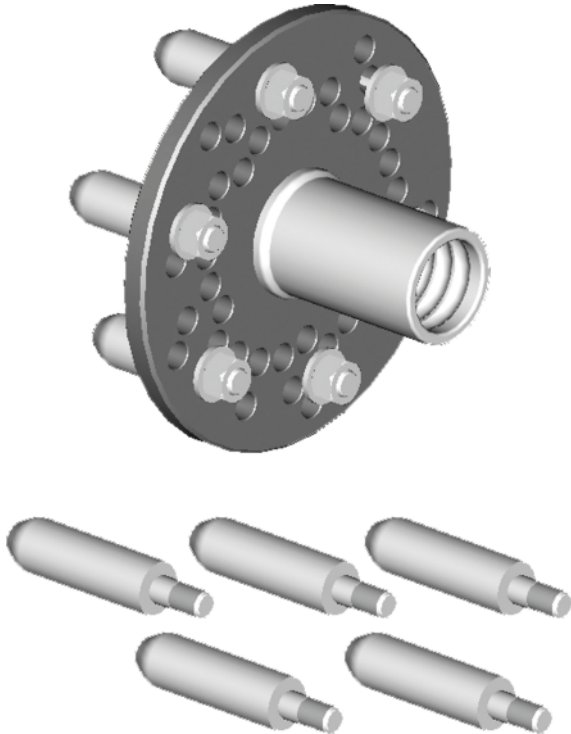
Scope of delivery:

- 5 x long (80 mm) and 5 x short (50 mm) elastic studs for - 5-hole rims (Ø 101.6 / 139.7 / 165.1 mm) - 6-hole rims (Ø 139.7 / 114.3 mm) - 4-hole rims (Ø 165.1 / 170 mm) - 3-hole rims (Ø 130 mm)

Stud adapter kit USA | Pneumatic | 5 x 101.6 / 139.7 / 165.1 mm | 6 x 139.7 / 114.3 mm | 4 x 165.1 / 170 mm | 3 x 130 mm

Includes 5 x long (80 mm) and 5 x short (50 mm) elastic studs

Article number: 1 692 502 069



- Stud adapter kit for high precision centering and protection of rims
- Studs and two washers ensure same pressure on all rims
- For pneumatic clamping only

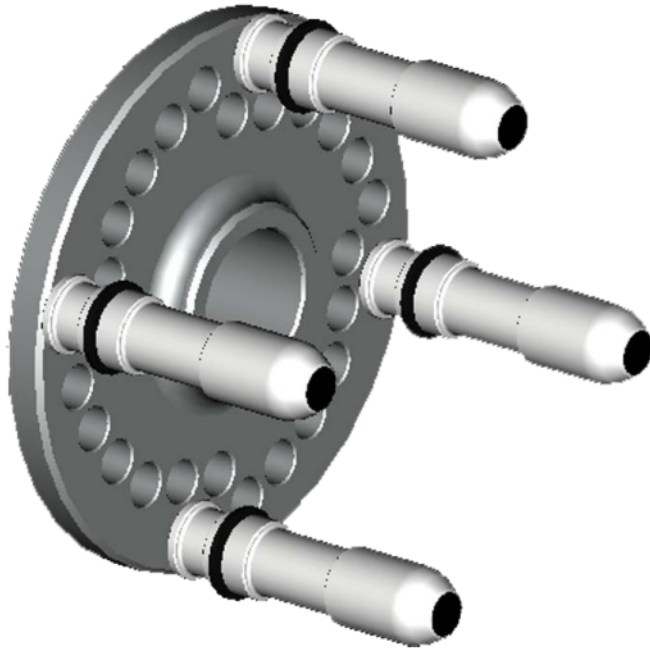
Scope of delivery:

- 5 x long (80 mm) and 5 x short (50 mm) elastic studs for - 5-hole rims (Ø 101.6 / 139.7 / 165.1 mm) - 6-hole rims (Ø 139.7 / 114.3 mm) - 4-hole rims (Ø 165.1 / 170 mm) - 3-hole rims (Ø 130 mm)

Stud adapter kit 4-hole | Manual | 4 x 98 / 100 / 108 / 110 / 114.3 / 120 / 130 mm

Includes 5 x long (86 mm) and 5 x short (68 mm) elastic studs

Article number: 1 692 502 056



- Stud adapter kit for high precision centering and protection of rims
- Studs and two washers ensure same pressure on all rims
- For manual clamping only

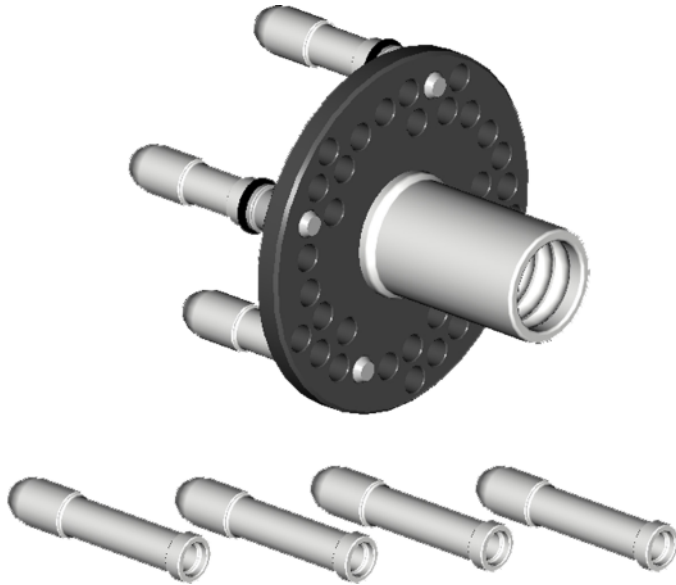
Scope of delivery:

- 5 x long (86 mm) and 5 x short (68 mm) elastic studs for - 4-hole rims (Ø 98 / 100 / 108 / 110 / 114.3 / 120 / 130 mm)

Stud adapter kit 4-hole | Pneumatic | 4 x 98 / 100 / 108 / 110 / 114.3 / 120 / 130 mm

Includes 5 x long (86 mm) and 5 x short (68 mm) elastic studs

Article number: 1 692 502 065



- Stud adapter kit for high precision centering and protection of rims
- Studs and two washers ensure same pressure on all rims
- For pneumatic clamping only

Scope of delivery:

- 5 x long (86 mm) and 5 x short (68 mm) elastic studs for - 4-hole rims (Ø 98 / 100 / 108 / 110 / 114.3 / 120 / 130 mm)

Stud adapter kit SR5 | Manual | 5 x 100 / 108 / 112 / 114.3 / 120 / 139.7 / 150 / 160 mm

Includes 5 x long (86 mm) and 5 x short (68 mm) elastic studs

Article number: 1 692 502 057



- Stud adapter kit for high precision centering and protection of rims
- Studs and two washers ensure same pressure on all rims
- For manual clamping only

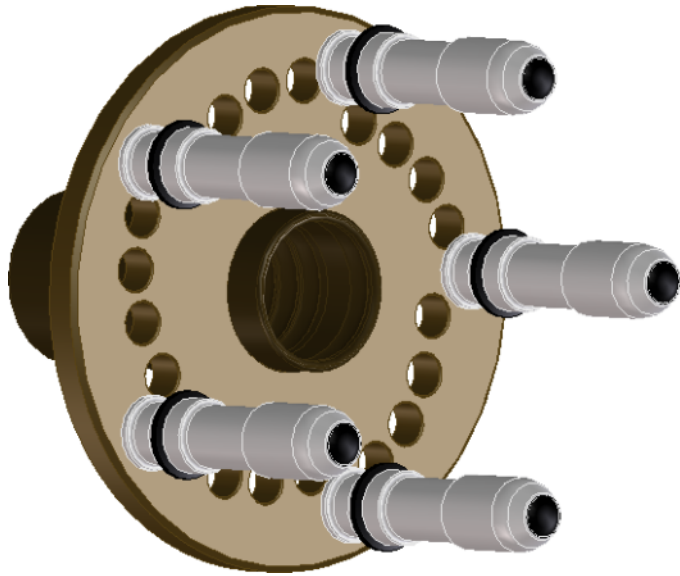
Scope of delivery:

- 5 x long (86 mm) and 5 x short (68 mm) elastic studs for - 5-hole rims (Ø 100 / 108 / 112 / 114.3 / 120 / 139.7 / 150 / 160 mm)

Stud adapter kit 5-hole | Manual | for Opel | 105 / 110 / 115 / 118 / 130 mm

Includes 5 x long and 5 x short elastic studs for different rim types

Article number: 1 692 502 058



- Stud adapter kit for high precision centering and protection of rims
- Studs and two washers ensure same pressure on all rims
- For manual clamping only

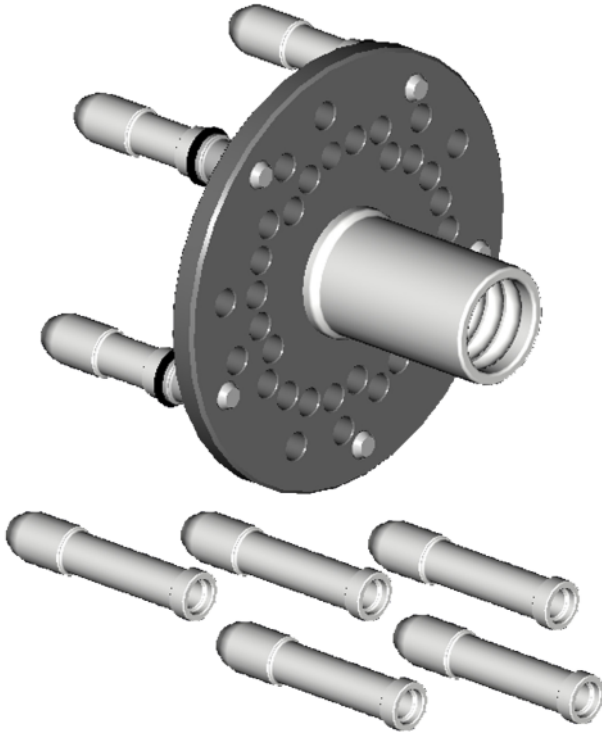
Scope of delivery:

- 5 x long and 5 x short elastic studs for different rim types (Ø 105 / 110 / 115 / 118 / 130 mm)

Typenspannflansch 5-hole | Pneumatic | 5 x 100 / 108 / 112 / 114.3 / 120 / 139.7 / 150 / 160 mm

Includes 5 x long (86 mm) and 5 x short (68 mm) elastic studs

Article number: 1 692 502 066



- Stud adapter kit for high precision centering and protection of rims
- Studs and two washers ensure same pressure on all rims
- For pneumatic clamping only

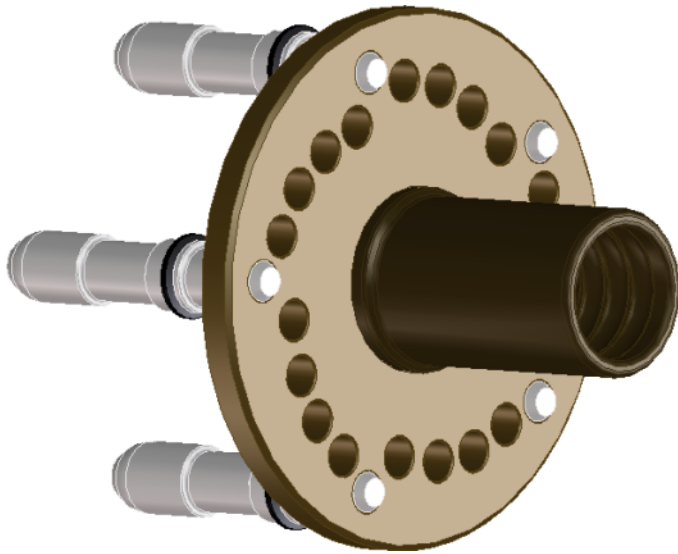
Scope of delivery:

- 5 x long (86 mm) and 5 x short (68 mm) elastic studs for - 5-hole rims (Ø 100 / 108 / 112 / 114.3 / 120 / 139.7 / 150 / 160 mm)

Stud adapter kit 5-hole | Pneumatic | for Opel | 105 / 110 / 115 / 118 / 130 mm

Includes 5 x long and 5 x short elastic studs for different rim types

Article number: 1 692 502 067



- Stud adapter kit for high precision centering and protection of rims
- Studs and two washers ensure same pressure on all rims
- For pneumatic clamping only

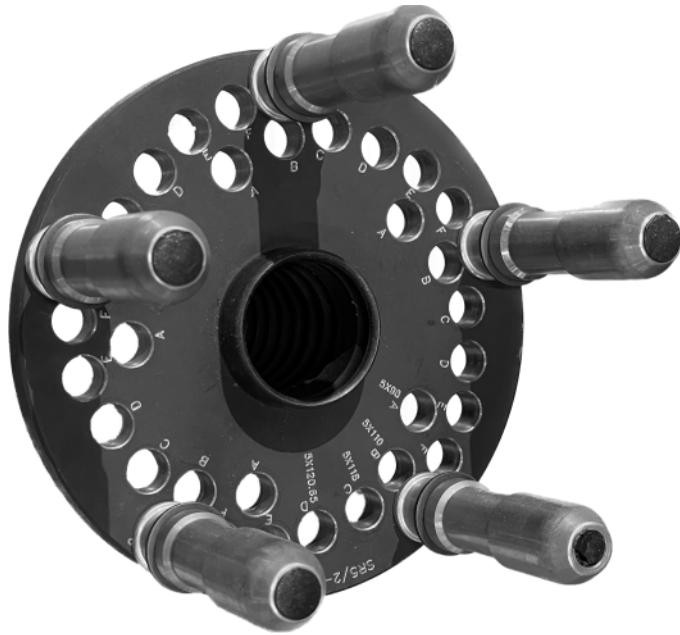
Scope of delivery:

- 5 x long and 5 x short elastic studs for different rim types (Ø 105 / 110 / 115 / 118 / 130 mm)

Stud adapter kit 5-hole | Manual | 5 x 98 / 110 / 118 / 120.65 / 127 / 130 / 140 mm

Includes 5 x long and 5 x short elastic studs

Article number: 1 692 502 059



- Stud adapter kit for high precision centering and protection of rims
- Studs and two washers ensure same pressure on all rims
- For manual clamping only

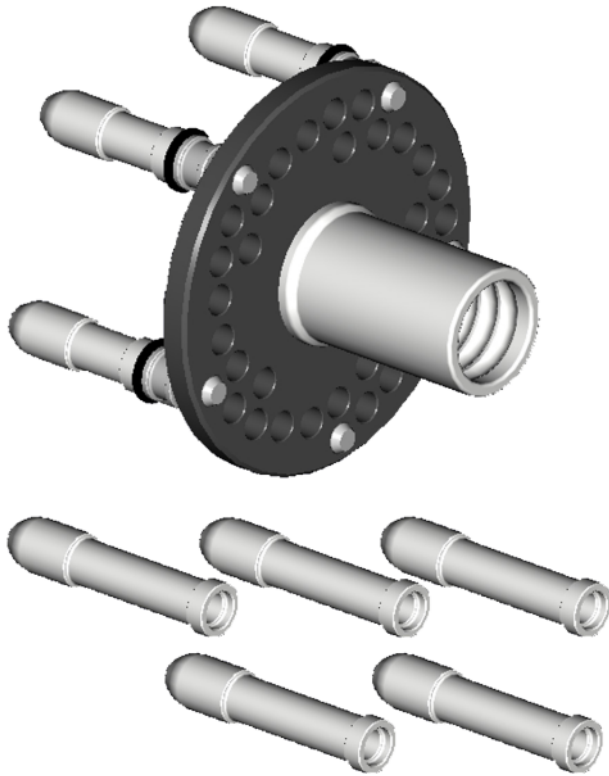
Scope of delivery:

- 5 x long and 5 x short elastic studs for - 5-hole rims (Ø 98 / 110 / 118 / 120.65 / 127 / 130 / 140 mm)

Stud adapter kit 5-hole | Pneumatic | 5 x 98 / 110 / 118 / 120.65 / 127 / 130 / 140 mm

Includes 5 x long and 5 x short elastic studs

Article number: 1 692 502 068



- Stud adapter kit for high precision centering and protection of rims
- Studs and two washers ensure same pressure on all rims
- For pneumatic clamping only

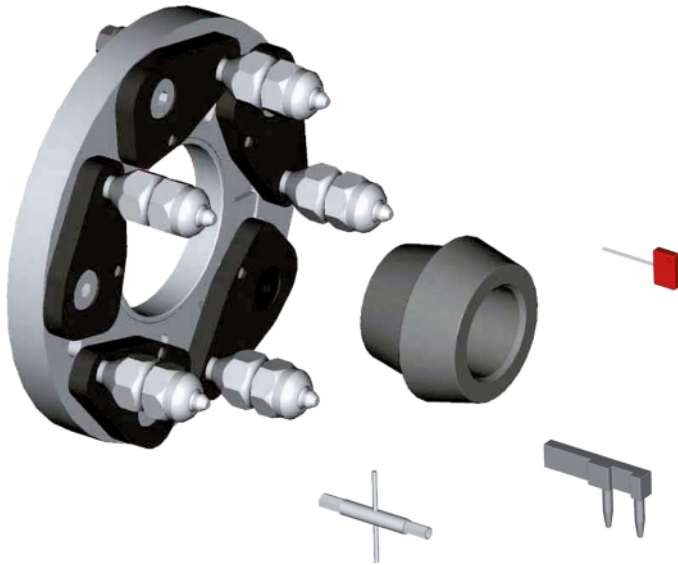
Scope of delivery:

- 5 x long and 5 x short elastic studs for - 5-hole rims (Ø 98 / 110 / 118 / 120.65 / 127 / 130 / 140 mm)

Universal 3-4-5-6-hole adapter | Ø 95 - 120 mm

Universal adapter for all wheels with 3, 4, 5, and 6 holes (bolt circle Ø 95-120 mm).

Article number: 1 692 502 037



- Includes double centering cone
- For wheels with/without center hole (Renault, Peugeot, and Citroën)
- Reduces clamping errors to a minimum

Universal 3-4-5-6-hole stud adapter | Manual | Ø 75 - 210 mm

For all 3-, 4-, 5-, and 6-hole rims (Ø 75 - 210 mm) | Includes 5 x long (103 mm) and 5 x short (68 mm) clip - on studs

Article number: 1 692 502 061



- Studs and two washers ensure same pressure on all rims
- Infinitely adjustable bolt circle from 75 to 210 mm
- For manual clamping only

Scope of delivery:

- 5 x long (103 mm) and 5 x short (68 mm) clip - on studs with spherical tip for - 3-, 4-, 5-, and 6-hole rims (Ø 75 - 210 mm)

Universal 3-4-5-6-hole stud adapter | Pneumatic | Ø 75 - 210 mm

For all 3-, 4-, 5-, and 6-hole rims (Ø 75 - 210 mm) | Includes 5 x long (103 mm) and 5 x short (68 mm) clip - on studs

Article number: 1 692 502 070



- Studs and two washers ensure same pressure on all rims
- Infinitely adjustable bolt circle from 75 to 210 mm
- For pneumatic clamping only

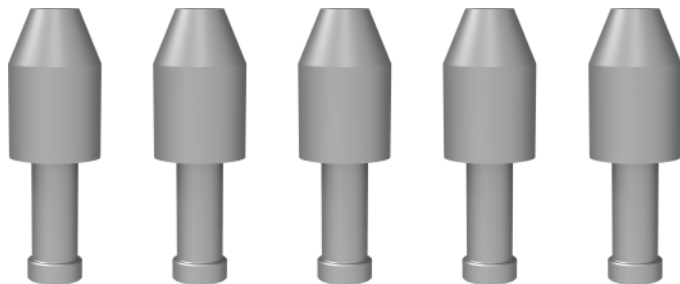
Scope of delivery:

- 5 x long (103 mm) and 5 x short (68 mm) clip - on studs with spherical tip for - 3-, 4-, 5-, and 6-hole rims (Ø 75 - 210 mm)

Clip-on studs Conical | 5 x 103 mm

Set of clip-on studs 103 mm long with conical tip

Article number: 1 692 502 064



Clip-on studs Conical | 5 x 68 mm

Set of clip-on studs 68 mm long with conical tip

Article number: 1 692 502 063



Clip-on studs Spherical | 5 x 123 mm

Set of clip-on studs 123 mm long with spherical tip

Article number: 1 692 502 062



Centering disc Ø 130 mm | for 3-arm star adapter SR3

For Iveco Daily / Renault Master II

Article number: 1 692 502 041



Centering disc Ø 142 mm | for 3-arm star adapter SR3

For Renault Master III / Traffic / Opel Movano

Article number: 1 692 502 039



Centering disc Ø 161 mm | for 3-arm star adapter SR3

For VW Crafter / Mercedes-Benz Sprinter

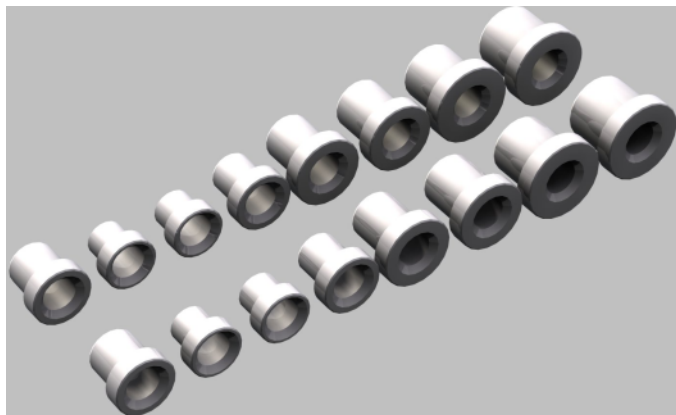
Article number: 1 692 502 040



Centering bushes kit 2 x Ø 15 / 16 / 17 / 19.05 / 20 / 22 / 25 / 28 mm | 16 pcs.

Centering bushes for motorcycle and scooter adapter 1692502073

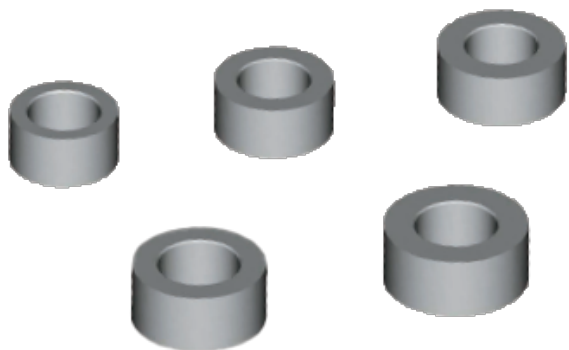
Article number: 1 692 502 074



Centering kit for PSA | 5 pcs.

High precision set consisting of 3 bushes (Ø 58 / 60 / 65 mm) and 2 cones (Ø 62 - 68 mm and Ø 54 - 60 mm) | complies with Peugeot and Citroën requirements

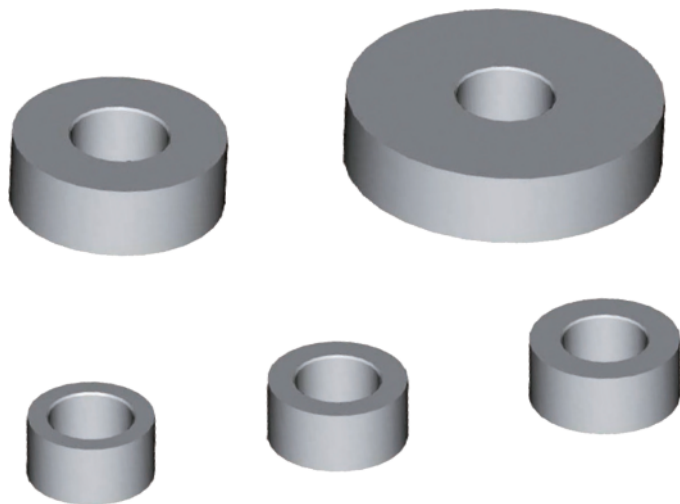
Article number: 1 692 502 050



Centering kit for Renault | 5 pcs.

Set consisting of 5 bushes (Ø 60 / 66 / 71 / 88 / 129.9 mm) | complies with Renault requirements

Article number: 1 692 502 051



Centering kit 4-arm and 5-arm star | for truck

For centering wheels with 8 holes on \varnothing 275 / 285.75 mm and 10 holes on \varnothing 225 / 285.75 / 335 mm | set consisting of 5 - arm and 4 - arm stars, centering adapter, stud bolts and screws

Article number: 1 692 502 026



G.Zero Wheel lift | with memory function

Pneumatic wheel lift with memory function

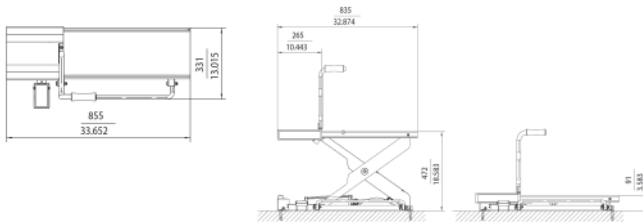
Article number: 1 692 502 000



Zero Gravity - The Wheel Lift for Professionals

- Pneumatic lifting and lowering of wheels up to 80kg
- Automatic lowering of lift upon closing the wheel guard
- Weightless: Automatic weight compensation for easy and secure clamping
- Memory function: Automatically adjusts to the correct height for the next wheels
- Faster than comparable solutions
- Effortlessly adjustable in height and sideways.
- Low height for easy rolling of heavy tires onto the lift

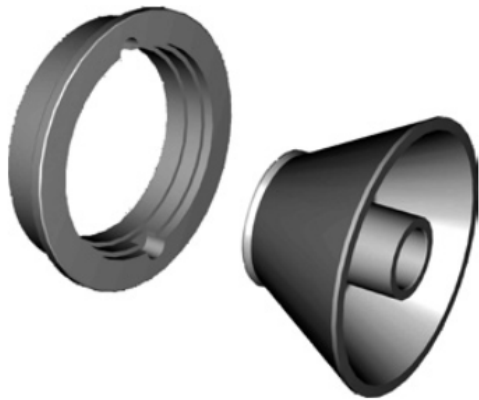
Suitable for all Beissbarth wheel balancers. Requires pneumatic and electronic connection to the wheel balancer.



Light truck cone with 36mm distance ring | for light truck wheels with center hole Ø 97-170mm

Kit for light truck wheels with center hole Ø 97-170mm

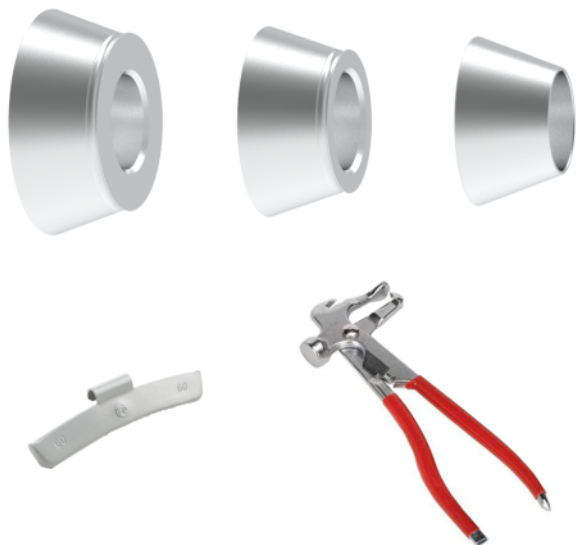
Article number: 1 692 502 046



3 Cones kit | Ø45-110mm

Includes 3 cones for Ø 45-110 mm, pincer-hammer and calibration weight

Article number: 1 692 502 171



Pneumatic clamping kit

Pneumatic clamping sleeve, clamping cap, sleeve and ring

Article number: 1 692 502 172



Distance ring 36mm | in combination with light truck cone 1692502047

Article number: 1 692 502 048



To be used in combination with light truck cone 1692502047. 36mm distance ring 1692502048 is mounted on the inside. The light truck cone is used to lock the wheel from the outside.

Eccentricity Diagnostic Upgrade | for G.50 with touch monitor

Diagnostic Upgrade of the G.50 wheel balancer with a rear sonar to enable eccentricity measurements. This advanced feature determines the roundness of the wheel assembly when rotating. Additionally, the newly unlocked Hubmatching feature allows rotating the tyre on the rim to minimize total imbalance before applying correction weights.

Article number: 1 692 502 165



Standard Service



Start Line BA 201 | RAL7016 | 230V

Article number: 1 694 400 026



Start Line BA 201 | RAL5015 | 230V

Article number: 1 694 200 949



Wheel balancer G.20 LCD

Article number: 1 692 501 007



Wheel balancer G.20

Article number: 1 692 501 000



Wheel balancer G.50 LCD

Article number: 1 692 501 009



Wheel balancer G.50

Article number: 1 692 501 002



Wheel balancer G.50P

Article number: 1 692 501 003

Premium Service



Wheel balancer G.60P Pro | Diagnostic

Article number: 1 692 501 004

High Volume



Wheel balancer G.30

Article number: 1 692 501 001



Wheel balancer G.30P

Article number: 1 692 501 013

Truck



Wheel balancer G.90 HD

Article number: 1 692 501 005



Wheel balancer G.90 HD Pro | Diagnostic

Article number: 1 692 501 006

IMPORTANT NOTES

- Please notice: This list contains spare parts, too.
- Without instruction or assembly.
- Delivery ex works including packaging.

VERSION 2025.06.06 – PRICES ON REQUEST

- Starting from now all previous lists will lose their validity.
- Please read our general terms and conditions in the latest version before ordering; to be found under www.beissbarth.com.

Beissbarth Automotive Testing Solutions GmbH

Friedrichshafener Str. 602
82205 Gilching, Germany
sales@beissbarth.com
www.beissbarth.com

Telefon: +49-(0)89-14901-0

Telefax: +49-(0)89-14901-246

Order number 1 693 602 008 **Print norm** BB XXX / XX.XX.2020 DE · Subject to technical and program changes, errors excepted.

